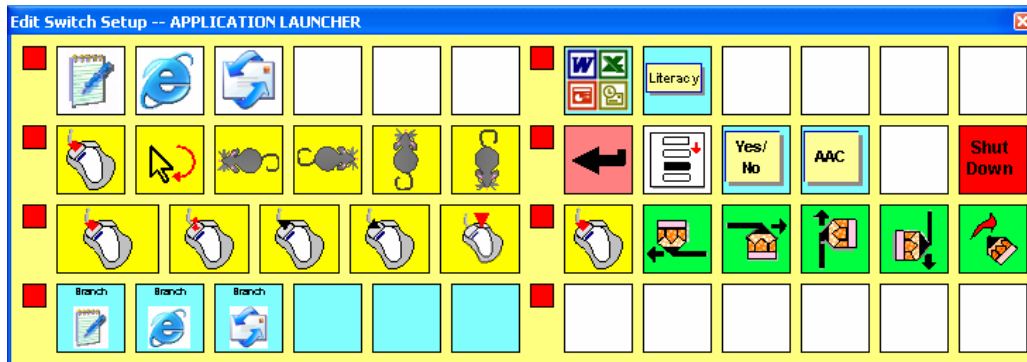


Discover and Internet Explorer

Quick Start – Windows 2000 and XP

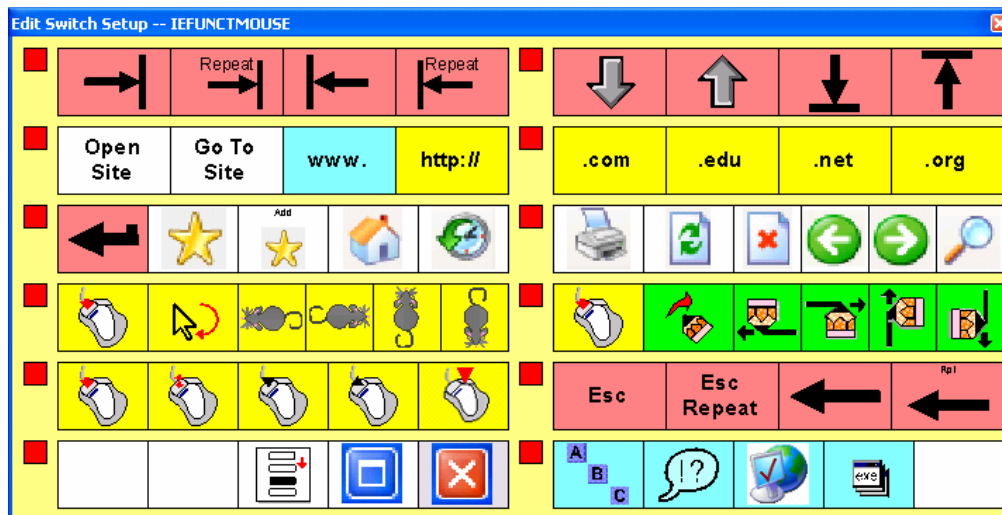
Using Discover to Browse the Internet with Internet Explorer

Application Launcher setup:



1. Use **Internet Explorer** key (pictured by the large blue “e” within Group 1 – Subgroup 1) to start Internet Explorer.

IEFunctMouse setup:



2. Use the **Up Arrow** or **Down Arrow** keys and the **Bottom** and **Top** keys (Group 1 – Subgroup 2) to navigate the page – when using the **Up Arrow** or **Down Arrow** keys, activate Discover once more to stop scrolling up or down the page.
3. Use the **Tab Repeat** and the **Shift Tab Repeat** (Group 1 – Subgroup 1) to navigate through the links on the page – activate Discover once more when the desired link is highlighted.
4. Use **Enter** (Group 3 – Subgroup 1) to select a link on the page.
5. Use **Back** (Group 3 – Subgroup 2) to go back to the previous page.
6. Use **Forward** (Group 3 – Subgroup 2) to go forward a page.
7. Use **Home** (Group 3 – Subgroup 1) to load the default page set for Internet Explorer.

Discover and Internet Explorer – Quick Start

Madentec Limited, 4664 – 99th Street, Edmonton, Alberta, Canada T6E 5H5

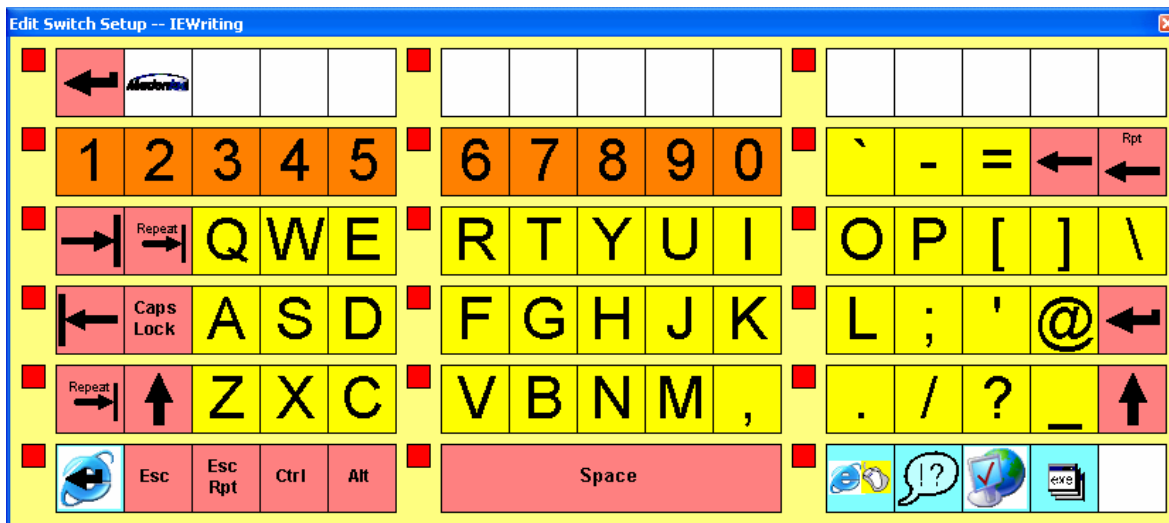
(877) 623-3682 • www.madentec.com

Enabling Extraordinary People to do Ordinary Things!



8. Use **View Favorites** (Group 3 – Subgroup 1) to see the list of Favorites (notice that this page is not listed) – please **do not** select a choice at this time – select **Esc Repeat** (Group 5 – Subgroup 2) and then activate Discover again when there is no visible highlighting of the Favorites menu item.
9. Use **Add Favorite** (Group 3 – Subgroup 1) to add this page to the Favorites list.
10. Use **Enter** (Group 3 – Subgroup 1) to complete the process of adding the Favorite.
11. Use **View Favorites** (Group 3 – Subgroup 1) to see the list of Favorites (notice that newly added website is now listed) – please **do not** select a choice at this time – select **Esc Repeat** (Group 5 – Subgroup 2) and then activate Discover again when there is no visible highlighting of the Favorites menu item.
12. Open an internet site by keying in its information:
 - a. Use **Open Site** (Group 2 – Subgroup 1).
 - b. Use **www.** (Group 2 – Subgroup 1) – Discover then branches to the *IEWriting* setup to allow for the continuing of entering the web site address.

IEWriting setup:



- c. Use Discover to type “**abc**” or other address.
 - d. Use the first key in Group 6 – Subgroup 3 (pictured by the large blue “e” and the icon of a desktop mouse) to branch back to the *IEFunctMouse* setup.
 - e. Use **.com** (Group 2 – Subgroup 2).
 - f. Use **Enter** (Group 3 – Subgroup 1).
13. Open a website that is preprogrammed into one Discover key:
 - a. Use the first key in Group 6 – Subgroup 2 (pictured by the diagonal “ABC”) to branch back to the *IEWriting* setup.
 - b. Use the **Mad Site** (Group 1 – Subgroup 1) key to open up the Madentec website.
14. Open a website from the Favorites Menu.
 - a. Use the first key in Group 6 – Subgroup 3 (pictured by the large blue “e” and the icon of a desktop mouse) to branch back to the *IEFunctMouse* setup.
 - b. Use **View Favorites** (Group 3 – Subgroup 1)
 - c. Use the **Down Arrow** key (Group 1 – Subgroup 2) to navigate the Favorites list – activate Discover again when the new Favorite is highlighted.
 - d. Use **Enter** (Group 3 – Subgroup 1) to activate the highlighted Favorite.
15. Use any combination of the **Mouse Emulation** keys (All of Group 4, and, Group 5 – Subgroup 1) to practice accessing the internet via mouse emulation.
16. Use **Exit/Close Window** (Group 6 – Subgroup 1) for any popup windows or dialog boxes.
17. Use **Exit/Close Window** (Group 6 – Subgroup 1) to quit Internet Explorer.

Discover and Internet Explorer – Quick Start

Madentec Limited, 4664 – 99th Street, Edmonton, Alberta, Canada T6E 5H5

(877) 623-3682 • www.madentec.com

Enabling Extraordinary People to do Ordinary Things!

