

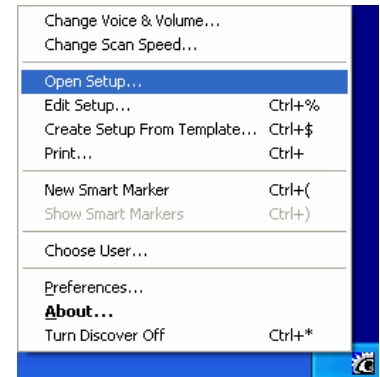
Discover Setups

Managing Setup Files

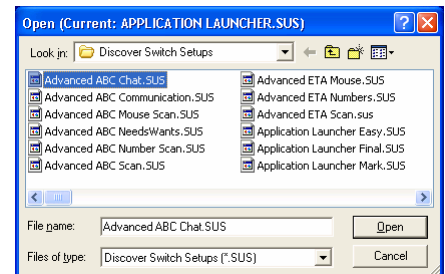
Opening a Different Setup

When working with setups, the setup that is being renamed, or being copied to/from the computer, must not be the active setup – i.e., the setup that appears on the screen when activating Discover by a switch. In order to rename or copy the setup, another setup must be opened, thus making it the active setup. The following steps will illustrate how to do this and for this example an updated **Application Launcher.sus** would be the setup that is to be copied to the computer. This is the setup that is attached (default) and active when the computer is at the desktop – i.e., not within another application.

1. From the **Discover Menu**, select **Open Setup**.



2. Click on **Advanced ABC Chat.sus**.
3. Click **Open**. (Enter)



Discover Setups

Madentec Limited, 4664 – 99th Street, Edmonton, Alberta, Canada T6E 5H5
(877) 623-3682 • www.madentec.com

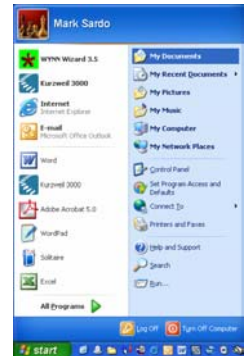
Enabling Extraordinary People to do Ordinary Things!



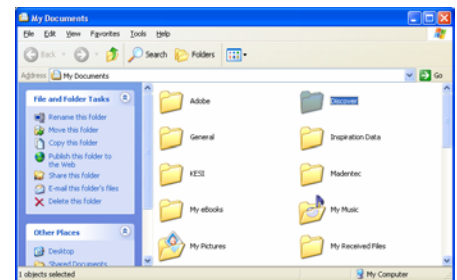
Renaming a Setup

If a setup is being copied to the computer and has the same name as one that already exists, consider renaming the existing setup in order to maintain a backup copy. In this example, the steps will be provided for renaming the existing **Application Launcher.sus** setup to **Application Launcher Old.sus**.

1. From the **Start Menu**, select **My Documents**.



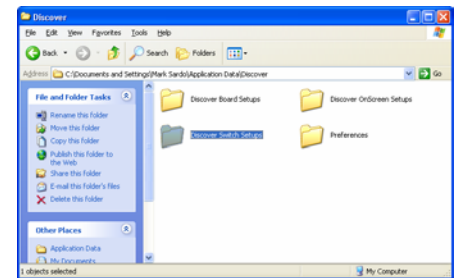
2. Double click the **Discover** folder.



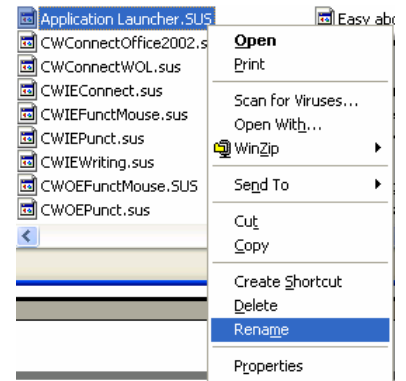
3. Double click the **Discover Setup** shortcut.



4. Double click the **Discover Switch Setup** folder.



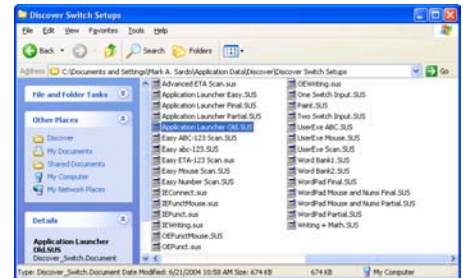
5. Right click on **Application Launcher.sus** and select **Rename**.



6. Type **Application Launcher Old.sus**.

7. Click in a blank area (white space) of the window to set the name. (**Enter**)

8. Click the close button of any open windows. (**Alt + F4**)



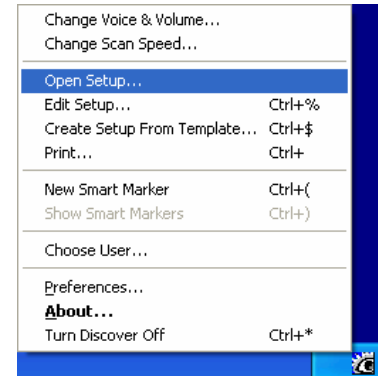
Copy a Setup

Now that the original **Application Launcher.sus** file is no longer the active Discover setup *and* it has been renamed (for backup purposes), another **Application Launcher.sus** file may be copied into the **Discover Switch Setups** folder. Use common operating system conventions for copying a setup (i.e., click and drag the new setup, use Ctrl + C for copying from the source and Ctrl + V to paste the new setup).



Opening the New Setup

1. From the **Discover Menu**, select **Open Setup**.



2. Click on **Application Launcher.sus**.
3. Click **Open**. (Enter)

