

# Discover Branching

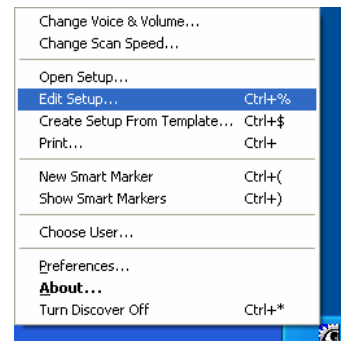
## Using Multiple Setups with an Application

### Branching Between Two Setups

It is possible to use more than one setup with a particular application by implementing the technique of branching. Branching is used to automatically switch between 2 or more setups. It is critical to note that a branch key will need to be created in all setups involved in a branch. This will assure that the user will be able to branch back to the original setup that is attached to an application without having to exit and restart the application. Additionally, it is important to keep all setups that branch together in the same folder (the *Discover Switch Setups* folder).

Thus far, the *WordPad Partial* setup includes text and other keys but no mouse control keys. Instead of adding several more keys to this setup, one branch key will be added to switch to the *WordPad Mouse and Nums Partial* setup which includes number and mouse emulation keys. Of course, a branch key will be added to the *WordPad Mouse and Nums Partial* setup to return back to the *WordPad Partial* setup.

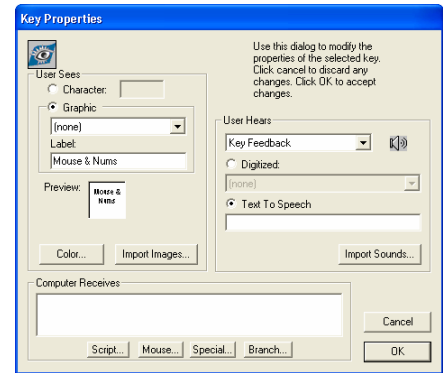
1. Click once anywhere on a blank area of the desktop.
2. Activate **Discover**.
3. Activate **Discover** when the first group is highlighted.
4. Activate **Discover** when the first subgroup is highlighted.
5. Activate **Discover** when the **Word Pad** key is highlighted.
6. From the **Discover Menu**, click **Edit Setup**. (**Shift + Ctrl + 5**)



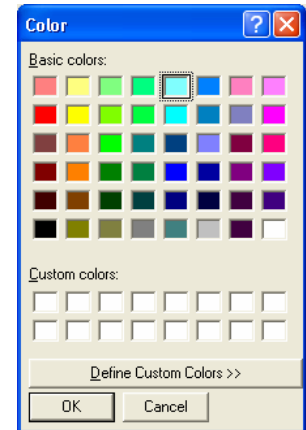
7. Double click the second key in the second subgroup of the fourth group.



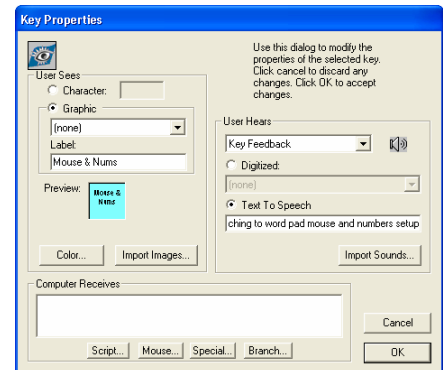
8. Under **User Sees**, click the **Graphic** radio button (if it is not already marked).
9. In the **Label** text box, type “**Mouse & Nums**”.
10. Click **Color**.



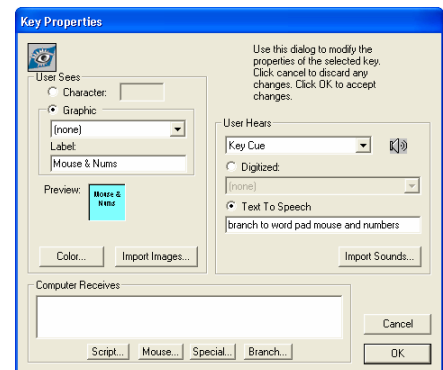
11. Under **Basic Colors**, click the first palette item (light blue) located in the fifth column.
12. Click **OK**. (**Enter**)



13. Under **User Hears**, notice the drop down menu labeled **Key Feedback**.
14. Click the **Text To Speech** radio button (if it is not already marked).
15. In the **Text To Speech** text box, type “**branching to word pad mouse and numbers setup**”.
16. Click the **Speaker** icon to hear a preview.



17. Click the drop down menu labeled **Key Feedback**.
18. Click **Key Cue**.
19. Click the **Text To Speech** radio button (if it is not already marked).
20. In the **Text To Speech** text box, type “**branch to word pad mouse and numbers**”.
21. Click the **Speaker** icon to hear a preview.
22. Under **Computer Receives** click **Branch**.



### Discover Branching

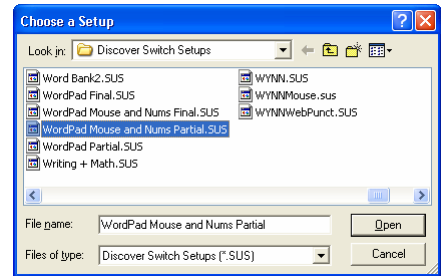
Madentec Limited, 4664 – 99th Street, Edmonton, Alberta, Canada T6E 5H5

(877) 623-3682 • [www.madentec.com](http://www.madentec.com)

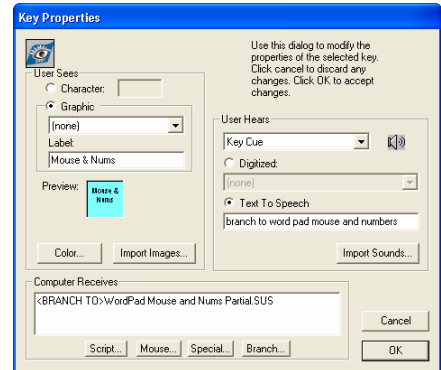
Enabling Extraordinary People to do Ordinary Things!



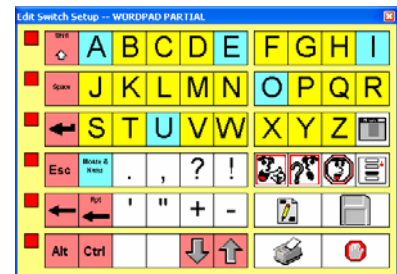
23. If necessary, use the scroll bar to find the **WordPad Mouse and Nums Partial** setup.
24. Click the **WordPad Mouse and Nums Partial** setup in the list.
25. Click **Open**. (Enter)



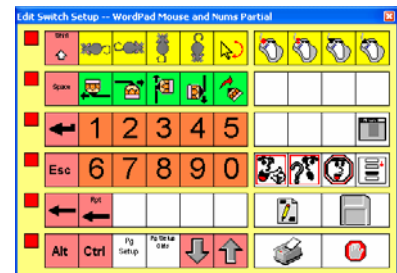
26. Click **OK**.



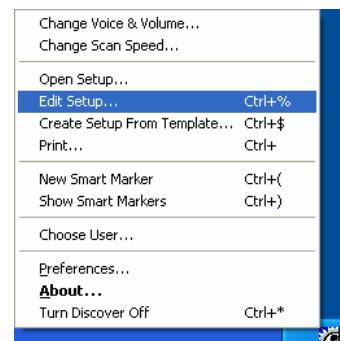
27. Click the **X** button to close the **WORDPAD PARTIAL** setup. (Alt + F4)
28. Activate **Discover**.
29. Activate **Discover** when the fourth group is highlighted.
30. Activate **Discover** when the second subgroup is highlighted.
31. Activate **Discover** when the **Mouse & Nums** key is highlighted.



32. Activate **Discover**.
33. Notice the **WORDPAD MOUSE AND NUMS PARTIAL** setup appears on the screen and begins to be scanned.
34. Activate **Discover** as many times as needed to access a **Stop Scanning** key.



35. From the **Discover Menu**, click **Edit Setup**. (Shift + Ctrl + 5)



### Discover Branching

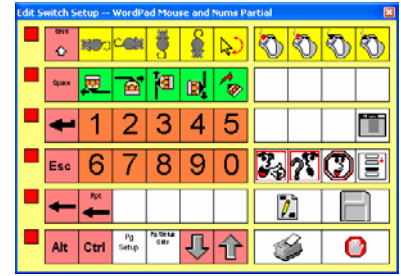
Madentec Limited, 4664 – 99th Street, Edmonton, Alberta, Canada T6E 5H5

(877) 623-3682 • [www.madentec.com](http://www.madentec.com)

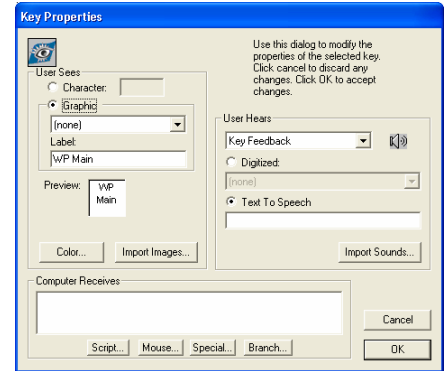
Enabling Extraordinary People to do Ordinary Things!



36. Double click the third key in the second subgroup of the fifth group.



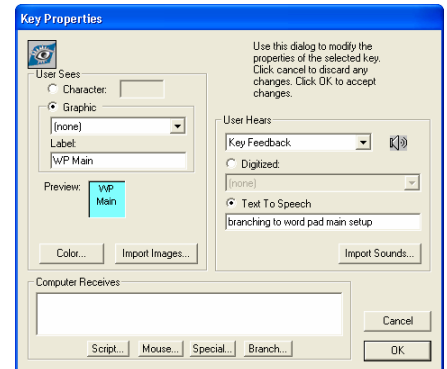
- 37. Under **User Sees**, click the **Graphic** radio button (if it is not already marked).
- 38. In the **Label** text box, type “WP Main”.
- 39. Click **Color**.



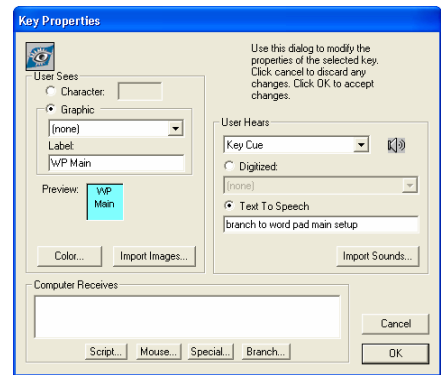
- 40. Under **Basic Colors**, click the first palette item (light blue) located in the fifth column.
- 41. Click **OK**. (**Enter**)



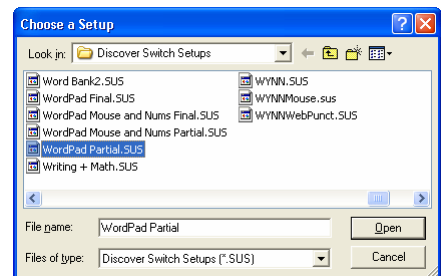
- 42. Under **User Hears**, notice the drop down menu labeled **Key Feedback**.
- 43. Click the **Text To Speech** radio button (if it is not already marked).
- 44. In the **Text To Speech** text box, type “branching to word pad main setup”.
- 45. Click the **Speaker** icon to hear a preview.



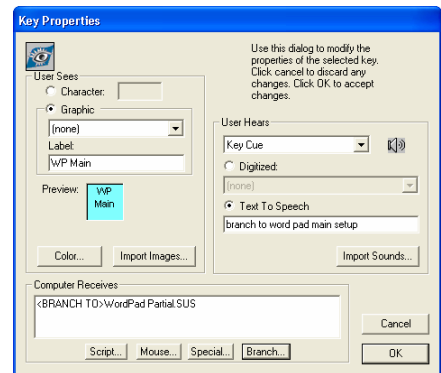
46. Click the drop down menu labeled **Key Feedback**.
47. Click **Key Cue**.
48. Click the **Text To Speech** radio button (if it is not already marked).
49. In the **Text To Speech** text box, type “**branch to word pad main setup**”.
50. Click the **Speaker** icon to hear a preview.
51. Under **Computer Receives** click **Branch**.



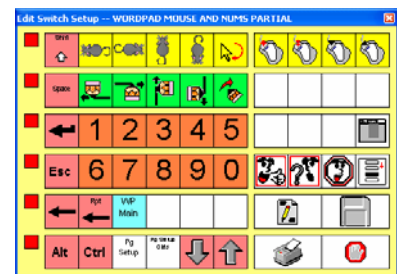
52. If necessary, use the scroll bar to find the **WordPad Partial** setup.
53. Click the **WordPad Partial** setup in the list.
54. Click **Open**. (Enter)



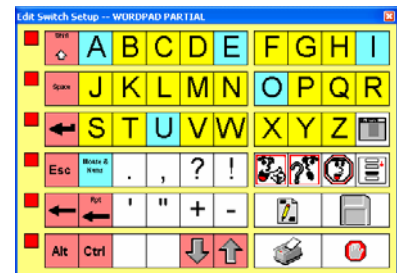
55. Click **OK**.



56. Click the **X** button to close the **WORDPAD MOUSE AND NUMS PARTIAL** setup. (Alt + F4)
57. Activate **Discover**.
58. Activate **Discover** when the fifth group is highlighted.
59. Activate **Discover** when the second subgroup is highlighted.
60. Activate **Discover** when the **WP Main** key is highlighted.



61. Activate **Discover**.
62. Notice the **WORDPAD PARTIAL** setup appears on the screen and begins to be scanned.
63. Activate **Discover** when the fourth group is highlighted.
64. Activate **Discover** when the second subgroup is highlighted.
65. Activate **Discover** when the **Mouse & Nums** key is highlighted.



### Discover Branching

Madentec Limited, 4664 – 99th Street, Edmonton, Alberta, Canada T6E 5H5

(877) 623-3682 • [www.madentec.com](http://www.madentec.com)

Enabling Extraordinary People to do Ordinary Things!



