

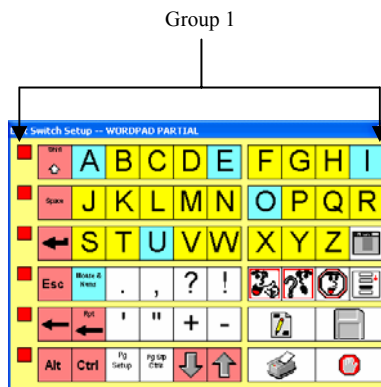
Discover Setup Layout

Groups and Subgroups

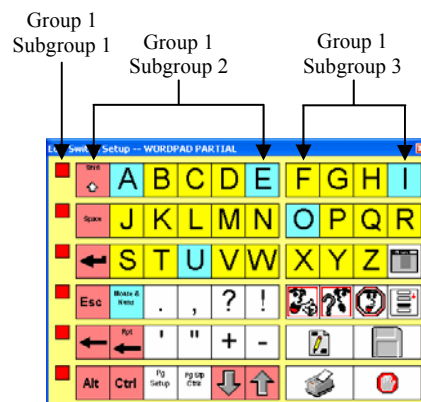
Groups (Row or Column Scanning)

Depending upon the setup, the use of row *or* column scanning may have been built in to make navigating to a desired key a more efficient process. Again, if the setup has a larger number of keys, it may be designed to provide a combination of row first *then* column scanning; *or* column first *then* row scanning, thus providing an even more efficient method to navigate the keys.

Once Discover scanning is activated, should a setup first scan across a row, then the technique used is Row/Column scanning. Should the setup begin by scanning down a column, then the technique used is Column/Row scanning. Whether the setup scans the rows or the columns first, determines how many groups are contained in the setup. Since the *WordPad Partial* setup begins by scanning across the rows, there are six groups in this setup. If the *WordPad Partial* setup began by scanning down the columns, there would only be three groups in this setup.



Each group contains three smaller groups called subgroups. In each of the six groups, the first subgroup contains only one key – a stop scanning key. In groups 1 through 4, the second subgroup contains six keys, while the third subgroup contains four keys. In groups 5 and 6, the second subgroup contains six keys, while the third subgroup contains only two keys.



Discover Setup Layout

Madentec Limited, 4664 – 99th Street, Edmonton, Alberta, Canada T6E 5H5

(877) 623-3682 • www.madentec.com

Enabling Extraordinary People to do Ordinary Things!

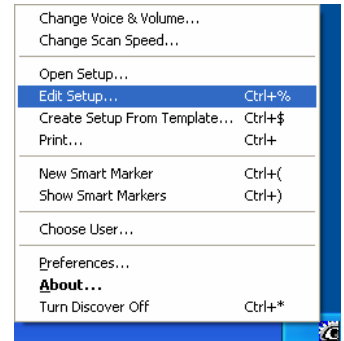


While the number of groups and/or subgroups can not be altered, the auditory cueing and feedback may be customized. This section will provide the steps to edit the auditory cueing of the *Groups* within the setup. The following section **Subgroups (Row and Column Scanning)**, will provide the steps to edit the auditory cueing of the subgroups. Should a subgroup only contain one key (i.e., the stop scanning keys on this setup) there will be no opportunity to enter either a subgroup cue or subgroup feedback.

1. Click once anywhere on a blank area of the desktop.
2. Activate **Discover**.
3. Activate **Discover** when the first group is highlighted.
4. Activate **Discover** when the first subgroup is highlighted.
5. Activate **Discover** when the **Word Pad** key is highlighted.



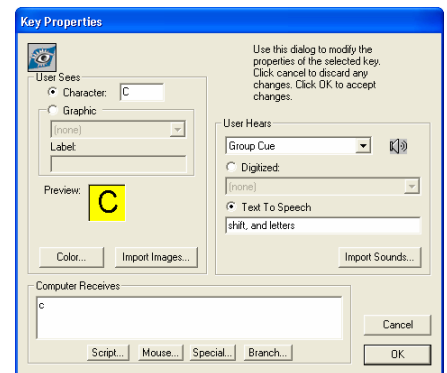
6. From the **Discover Menu**, click **Edit Setup**. (**Shift + Ctrl + 5**)



7. Double click any key in the first group (stop scanning, shift, letter keys a – i).



8. Click the drop down menu labeled **Key Feedback**.
9. Click **Group Cue**.
10. Click the **Text To Speech** radio button (if it is not already marked).
11. In the **Text To Speech** text box, type “**shift, and letters**”.
12. Click the **Speaker** icon to hear a preview.
13. Click **OK**.



Discover Setup Layout

Madentec Limited, 4664 – 99th Street, Edmonton, Alberta, Canada T6E 5H5

(877) 623-3682 • www.madentec.com

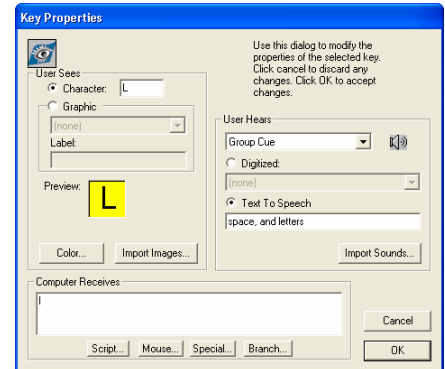
Enabling Extraordinary People to do Ordinary Things!



14. Double click any key in the second group (stop scanning, space, letter keys j – r).



15. Click the drop down menu labeled **Key Feedback**.
16. Click **Group Cue**.
17. Click the **Text To Speech** radio button (if it is not already marked).
18. In the **Text To Speech** text box, type “space, and letters”.
19. Click the **Speaker** icon to hear a preview.
20. Click **OK**.

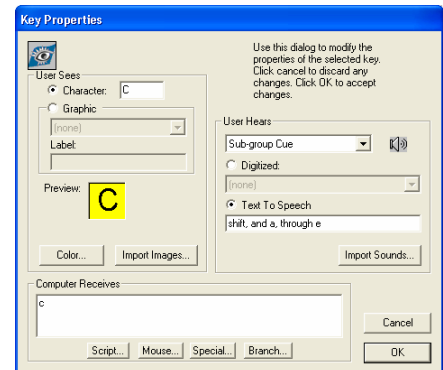
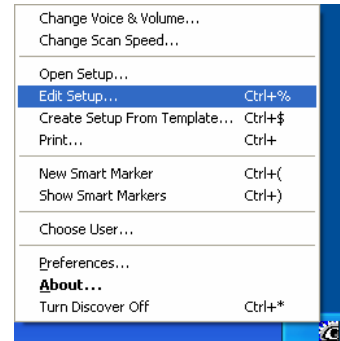


21. Click the **X** button to close the **WORDPAD PARTIAL** setup. (The remaining group cues have already been completed.) (**Alt + F4**)
22. If necessary, click once within the **WordPad** window to make it the active application.
23. Activate **Discover**.
24. Notice the *Group Cues* as each group is scanned.
25. Activate **Discover** when the first group is highlighted.
26. Notice the absence of the *Sub-group Cues* in the first group as the subgroups are scanned.
27. Activate **Discover** when either the second or third subgroup is highlighted.
28. Notice that each key is scanned individually and with an auditory prompt.
29. Explore this setup by using the row/column scanning technique to type some text.
30. Complete steps 6 – 15 in the section **Using Discover to Exit WordPad** in the **Discover Basic Editing** tutorial.

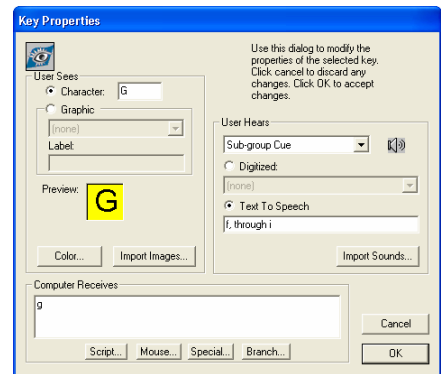


Subgroups (Row and Column Scanning)

- Click once anywhere on a blank area of the desktop.
- Activate **Discover**.
- Activate **Discover** when the first group is highlighted.
- Activate **Discover** when the first subgroup is highlighted.
- Activate **Discover** when the **Word Pad** key is highlighted.
- From the **Discover Menu**, click **Edit Setup**. (**Shift + Ctrl + 5**)
- Double click any key in the second subgroup of the first group (the **Shift**, **A**, **B**, **C**, **D**, or **E** key).
- Click the drop down menu labeled **Key Feedback**.
- Click **Sub-group Cue**.
- Click the **Text To Speech** radio button (if it is not already marked).
- In the **Text To Speech** text box, type “**shift, and a, through e**”.
- Click the **Speaker** icon to hear a preview.
- Click **OK**.
- Double click any key in the third subgroup of the first group (the **F**, **G**, **H**, or **I** key).



15. Click the drop down menu labeled **Key Feedback**.
16. Click **Sub-group Cue**.
17. Click the **Text To Speech** radio button (if it is not already marked).
18. In the **Text To Speech** text box, type “**f, through i**”.
19. Click the **Speaker** icon to hear a preview.
20. Click **OK**.



21. Click the **X** button to close the **WORDPAD PARTIAL** setup. (The remaining subgroup cues have already been completed.) (**Alt + F4**)
22. If necessary, click once within the **WordPad** window to make it the active application.
23. Activate **Discover**.
24. Notice the *Group Cues* as each group is scanned.
25. Activate **Discover** when the first group is highlighted.
26. Notice the *Sub-group Cues* as each subgroup is scanned.
27. Activate **Discover** when either the second or third subgroup is highlighted.
28. Notice that each key is scanned individually and with an auditory prompt.
29. Explore this setup by using the row/column scanning technique to type some text.
30. Complete steps 6 – 15 in the section *Using Discover to Exit WordPad* in the *Discover Basic Editing* tutorial.

