

# Discover Attachments

## Assigning/Changing Default Setups and Applications

### The Difference between Opening and Attaching a Setup with an Application

When *Discover* is installed, several setups are also installed and, for a limited number of applications one setup is automatically attached as the default. When one of these applications is launched, a setup designed to be used with that application is active and ready for use with *Discover*. *Advanced ABC Scan.sus* is the setup that is originally attached to WordPad. Attaching a setup to an application links that setup to that application for future use unless the setup is later detached, or a different setup is subsequently attached to that application.

Opening a setup will only temporarily provide that setup for use with the current application. Meaning it will only be available for one use of that application (i.e., until the user exits the application). Once the user reopens the application, the originally attached setup (if one is attached) will be available for use.

However, not all applications will have setups attached. Should one of these applications be launched, *Discover* will alert the user with a dialog box indicating no setup is attached and will provide an opportunity to: attach the setup currently being used (usually the setup that was used with the previous application was used on the computer); choose a different setup to attach; attach no setup; or attach no setup, but provide this same prompt the next time the application is launched.

### Using a Default Setup with an Application

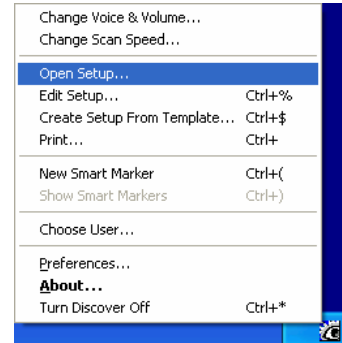
A Discover scanning setup has been created and attached for the computer's desktop (explorer) and is named *Application Launcher.sus*. Discover may then be used to select the first large key (**Word Pad**) in the first group, which will start the *WordPad* application.

1. Click once anywhere on a blank area of the desktop.
2. Activate **Discover**.
3. Activate **Discover** when the first group is highlighted.
4. Activate **Discover** when the first subgroup is highlighted.
5. Activate **Discover** when the **Word Pad** key is highlighted.
6. Activate **Discover**.
7. Notice the **Advanced ABC Scan.sus** setup appears on the screen and is then scanned by highlighting each group.



# Opening a Different Setup for One Time Use with an Application

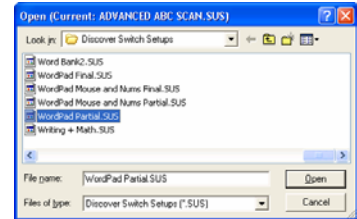
1. From the **Discover Menu**, click **Open Setup**.



2. Use the scroll bar to find the **WordPad Partial.sus** setup.

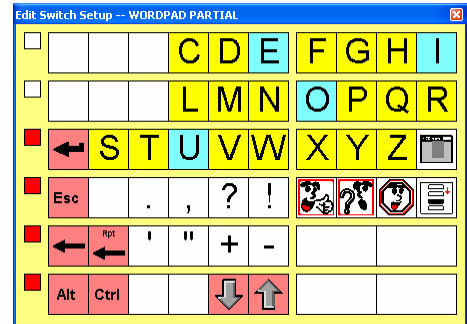
3. Click the **WordPad Partial.sus** setup in the list.

4. Click **Open**. (Enter)

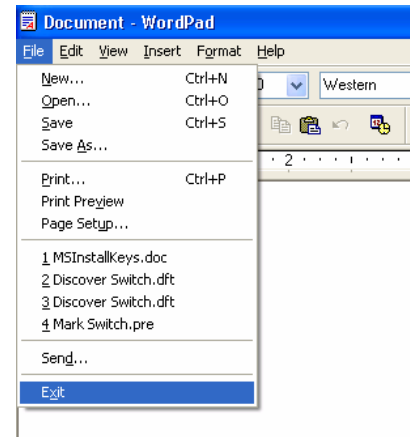


5. Activate **Discover**.

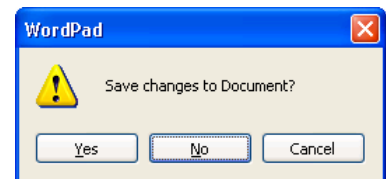
6. Notice the **WordPad Partial.sus** setup appears on the screen and is then scanned.



7. From the **File** pull down menu, select **Exit**. (Alt + F4)



8. Click **No**. (N)



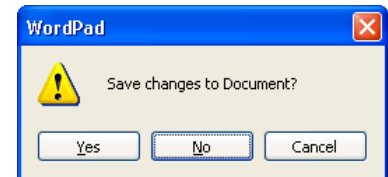
9. Click once anywhere on a blank area of the desktop.
10. Activate **Discover**.
11. Activate **Discover** when the first group is highlighted.
12. Activate **Discover** when the first subgroup is highlighted.
13. Activate **Discover** when the **Word Pad** key is highlighted.



14. Activate **Discover**.
15. Notice the **Advanced ABC Scan.sus** setup returns.
16. Activate **Discover** when the fourth group is highlighted.
17. Activate **Discover** when the third subgroup is highlighted.
18. Activate **Discover** when the **Exit** key is highlighted. (This will exit *WordPad*.)



19. If necessary, use the mouse to click **No**. (N)



### Discover Attachments

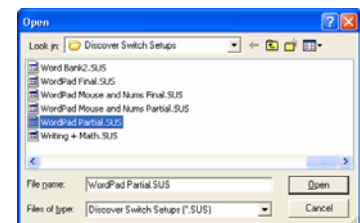
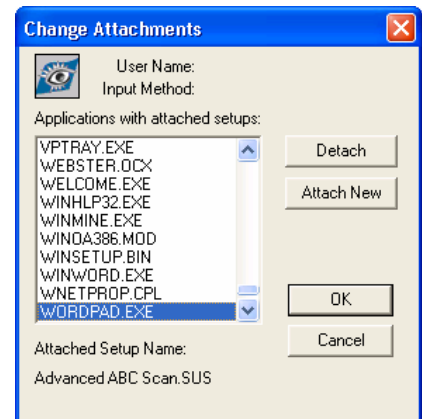
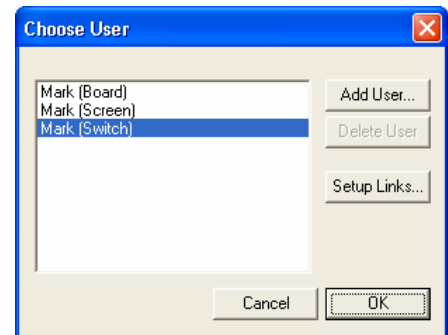
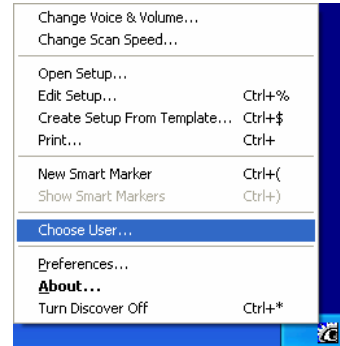
Madentec Limited, 4664 – 99th Street, Edmonton, Alberta, Canada T6E 5H5  
 (877) 623-3682 • [www.madentec.com](http://www.madentec.com)

Enabling Extraordinary People to do Ordinary Things!



# Attaching a Different (Default) Setup to an Application

1. From the **Discover Menu**, click **Choose User**. (This step is specific to **Discover:Kenx** software, if using **Discover:Switch** software, from the **Discover Menu**, click **Change Attachments**, and skip to **Step 3**.)
2. (The current Discover user will be highlighted by default.) Click **Setup Links**.
3. Under **Applications with attached setups**, click **WORDPAD.EXE** in the list.
4. Under **Attached Setup Name**, notice the setup attached is **Advanced ABC Scan.sus**.
5. Click **Attach New**.
6. Use the scroll bar to find the **WordPad Partial.sus** setup.
7. Click the **WordPad Partial.sus** setup in the list. (This is where a *different* setup – *WordPad Partial.sus* – is now attached (set as default) to WordPad.)
8. Click **Open**. (**Enter**)



## Discover Attachments

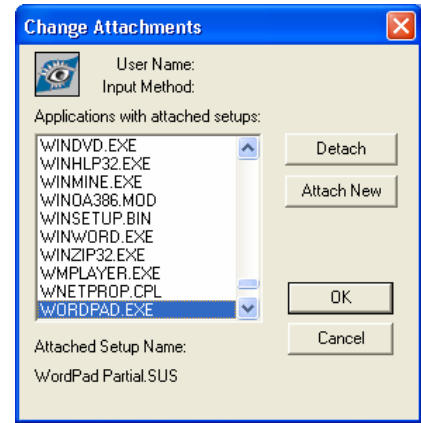
Madentec Limited, 4664 – 99th Street, Edmonton, Alberta, Canada T6E 5H5

(877) 623-3682 • [www.madentec.com](http://www.madentec.com)

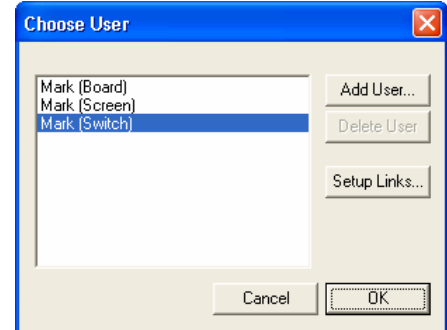
Enabling Extraordinary People to do Ordinary Things!



9. Under **Attached Setup Name**, notice the name of the newly attached setup is **WordPad Partial.sus**.
10. Click **OK**.



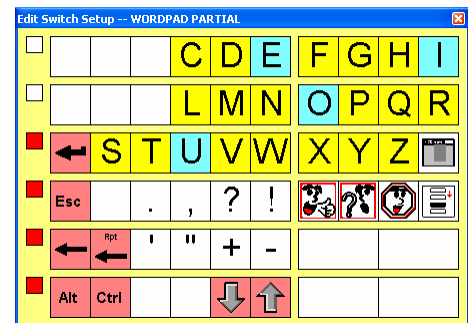
11. Click **OK**.



12. Click once anywhere on a blank area of the desktop.
13. Activate **Discover**.
14. Activate **Discover** when the first group is highlighted.
15. Activate **Discover** when the first subgroup is highlighted.
16. Activate **Discover** when the **Word Pad** key is highlighted.



17. Activate **Discover**.
18. Notice the **WordPad Partial.sus** setup appears on the screen.
19. Activate **Discover** as many times as needed until only a **Stop Scanning** button is highlighted.



### Discover Attachments

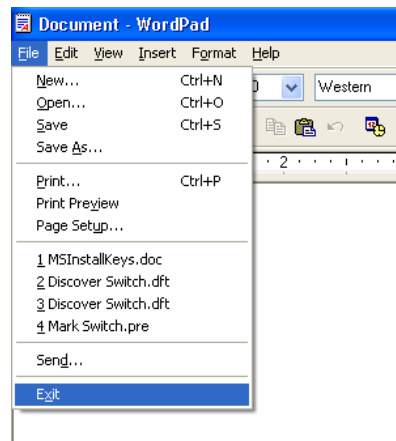
Madentec Limited, 4664 – 99th Street, Edmonton, Alberta, Canada T6E 5H5

(877) 623-3682 • [www.madentec.com](http://www.madentec.com)

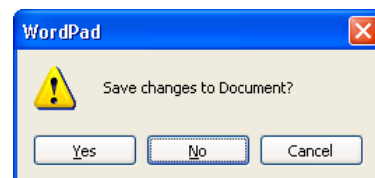
Enabling Extraordinary People to do Ordinary Things!



20. From the **File** pull down menu, select **Exit**. (**Alt + F4**)

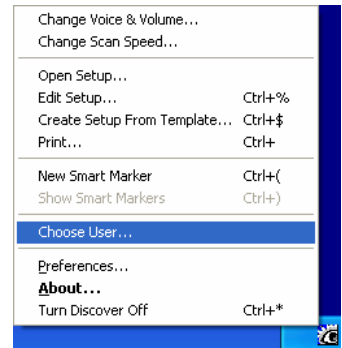


21. If necessary, click **No**. (**N**)

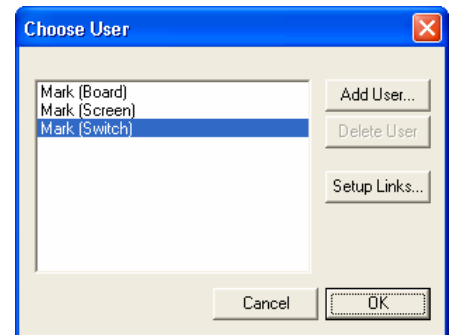


# Detaching a Default Setup from an Application

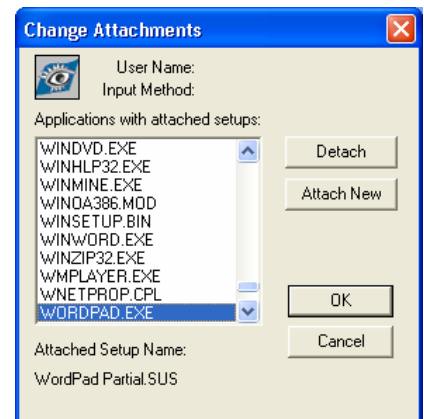
1. From the **Discover Menu**, click **Choose User**. (This step is specific to **Discover:Kenx** software, if using **Discover:Switch** software, from the **Discover Menu**, click **Change Attachments**, and skip to **Step 3**.)



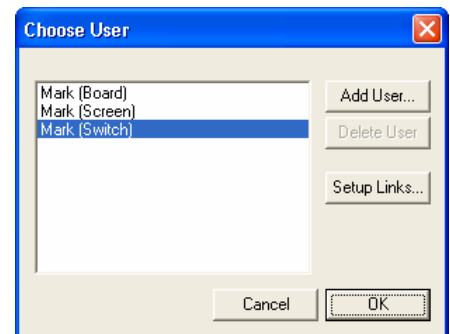
2. (The current Discover user will be highlighted by default.) Click **Setup Links**.



3. Under **Applications with attached setups**, click **WORDPAD.EXE** in the list.  
4. Click **Detach**.  
5. Click **OK**.

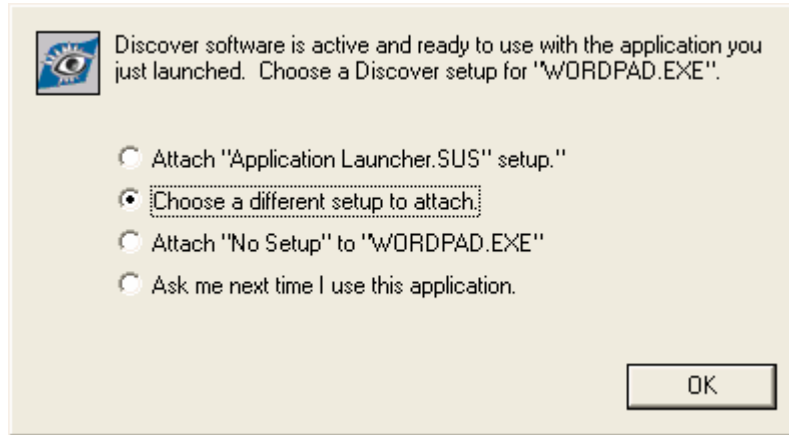


6. Click **OK**.



## A Note on Attaching a Setup to an Application with No Attachment (Default Setup)

When an application is launched that does not have a setup attached, Discover “sees” this and asks how to handle the application’s attachment. A dialog box like the one below will appear. In this example, the dialog box appeared when the application WordPad was launched.



- The first radio button provides the opportunity to attach the last active setup used on the computer. In this example, the last setup that the computer “saw” was one named *Application Launcher.sus*.
- The second radio button takes the user to the list of Discover setups where a setup can be selected and attached.
- The third radio button attaches no setup to the application being launched. This is useful for applications that other people use, but not by the Discover user.
- The fourth radio button does not attach a setup to the application at this time. The next time that this application is launched, Discover will present the user with this same dialog box.

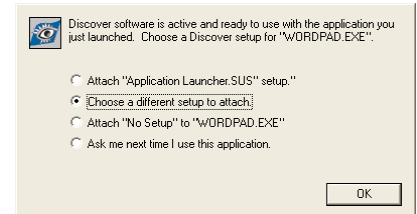
For the purpose of this document, the second radio button will be used.

# Attaching a Setup to an Application without an Attachment (Default Setup)

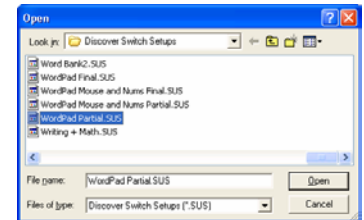
1. Click once anywhere on a blank area of the desktop.
2. Activate **Discover**.
3. Activate **Discover** when the first group is highlighted.
4. Activate **Discover** when the first subgroup is highlighted.
5. Activate **Discover** when the **Word Pad** key is highlighted.



6. Click the **Choose a different setup to attach** radio button.
7. Click **OK**. (Enter)



8. Use the scroll bar to find the **WordPad Partial.sus** setup.
9. Click the **WordPad Partial.sus** setup in the list.
10. Click **Open**. (Enter)



11. Activate **Discover**.
12. Notice the **WordPad Partial.sus** setup appears on the screen.
13. Activate **Discover** as many times as needed until only a **Stop Scanning** button is highlighted.

