

Discover and Internet Explorer

Using Discover for Internet Access on Windows 2000 and XP

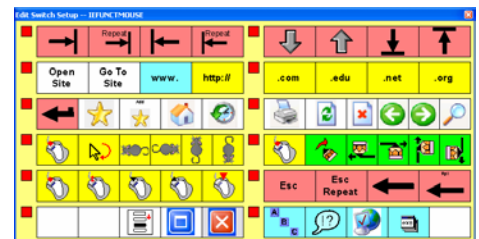
Using Discover to Launch and Exit Internet Explorer

Application Launcher.sus is a setup to be used to launch programs through Discover scanning access once the computer is powered on and is at the desktop. This setup is attached to EXPLORER.EXE and USER.EXE. The **IEFunctMouse.sus** setup is attached to Internet Explorer (IEXPLORE.EXE). The **IEFunctMouse.sus** setup contains access to the main functions of Internet Explorer as well as mouse emulation keys.

The **Application Launcher.sus** setup includes 4 groups of keys with two subgroups in each group. The first group includes the keys designed to launch individual pieces of software and provides branch keys to additional Application Launchers that are included with the Discover:Setups Volume I and II CD's. The second group includes keys for mouse single click, mouse pointer movement, Enter, Scan Buttons, and Shut Down. The third group includes the keys for mouse click functions (**Single Click**, **Double Click**, **Drag On**, **Drag Off**, and **Right Click**), and mouse clicking and dragging with movement functions (the green keys). The fourth group includes keys for the purpose of branching to the default setup for the corresponding software. The blank keys are provided to allow for further customization.

For this section, we will assume that there is an "always on" type of internet connection.

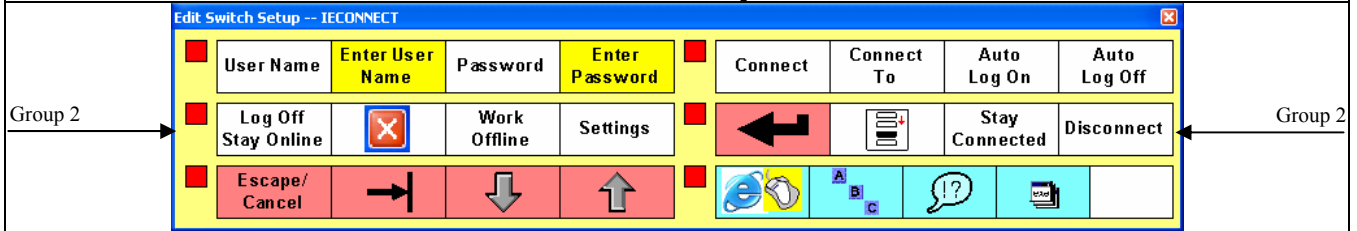
1. Click once anywhere on a blank area of the desktop.
2. Activate **Discover**.
3. Activate **Discover** when the first group is highlighted.
4. Activate **Discover** when the first subgroup is highlighted.
5. Activate **Discover** when the **Internet Explorer** key is highlighted.
6. Activate **Discover**.
7. Activate **Discover** when the sixth group is highlighted.
8. Activate **Discover** when the first subgroup is highlighted.
9. Activate **Discover** when the **Exit/Close Window** key is highlighted. (This will exit *Internet Explorer*.)



The following charts provide detailed descriptions of the function of each of the keys on the Internet Explorer “IE” setups:

IEConnect setup			
Edit Switch Setup -- IECONNECT			
Group 1 →		← Group 1	
Group	Subgroup	Key Name	Key Function
1	1	Stop Scanning	immediately cancels scanning without sending any information to the computer
		User Name	moves the point of text entry into the User name text box of the Dial-up Connection dialog box
		Enter User Name	enters the text for the User name in the Dial-up Connection dialog box – this is different for each user
		Password	moves the point of text entry into the Password text box of the Dial-up Connection dialog box
		Enter Password	enters the text for the Password in the Dial-up Connection dialog box – this is different for each user
	2	Stop Scanning	immediately cancels scanning without sending any information to the computer
		Connect	activates the Connect button in the Dial-up Connection dialog box
		Connect To	activates the Connect to drop down menu in the Dial-up Connection dialog box – use the Down Arrow or Up Arrow keys to navigate to the desired service – use the Enter key to select
		Auto Log On	automatically navigates and enters the necessary information in the Dial-up Connection dialog box – this information will be different for each user
		Auto Log Off	automatically exits Internet Explorer and disconnects the computer from the online service

IEConnect setup (continued)



Group	Subgroup	Key Name	Key Function	
2	1	Stop Scanning	immediately cancels scanning without sending any information to the computer	
		Log Off Stay Online	automatically exits Internet Explorer but leaves the computer modem connected to the online service	
		Exit/Close Window	Exits Internet Explorer – may also be used to close pop-up windows while on the internet – be sure that the pop-up window is the active window before activating this key	
		Work Offline	allows Internet Explorer to launch without dialing a connection to the internet	
		Settings	activates the Internet Properties dialog box	
	2	2	Stop Scanning	immediately cancels scanning without sending any information to the computer
			Enter	activates the enter key on the keyboard
			Scan Buttons	activates the scanning of dialog box buttons and other controls – activate Discover again to execute the desired selection as it is scanned
			Stay Connected	activates the Stay Connected button of the Auto Disconnect dialog box – use this to leave the computer connected to the online service
		Disconnect	activates the Disconnect Now button of the Auto Disconnect dialog box – use this to disconnect the computer from the online service	

Discover and Internet Explorer

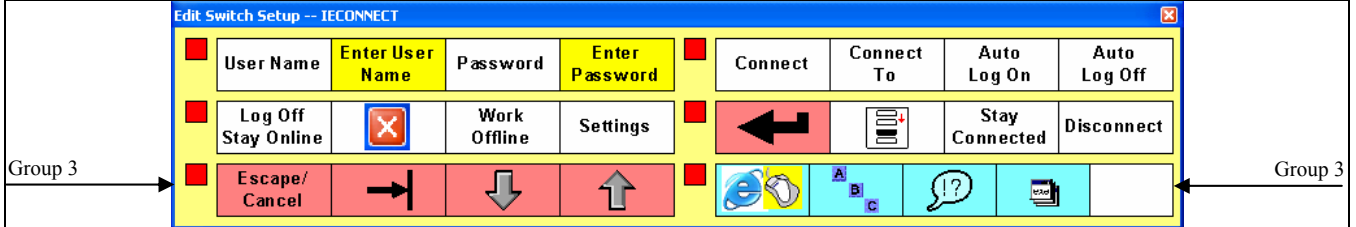
Madentec Limited, 4664 – 99th Street, Edmonton, Alberta, Canada T6E 5H5

(877) 623-3682 • www.madentec.com

Enabling Extraordinary People to do Ordinary Things!



IEConnect setup (continued)



Group	Subgroup	Key Name	Key Function
3	1	Stop Scanning	immediately cancels scanning without sending any information to the computer
		Escape/Cancel	activates the esc key on the keyboard – useful for accessing the cancel button of a dialog box
		Tab	activates the tab key on the keyboard – useful for tabbing forward through the links on a page – one link at a time
		Down Arrow	scrolls down or up – may be used to move down or up the items in a pull down menu or dialog box list – activate
		Up Arrow	Discover to stop
	2	Stop Scanning	immediately cancels scanning without sending any information to the computer
		Functions/ Mouse Control	branches to the IEFunctMouse setup – activate Discover to begin scanning
		Writing	branches to the IEWriting setup – activate Discover to begin scanning
		Other Punctuation	branches to the IEPunct setup – activate Discover to begin scanning
		Application Launcher	branches to the Application Launcher setup – activate Discover to begin scanning
		blank key	this key is intentionally left blank to provide for further customization

Discover and Internet Explorer

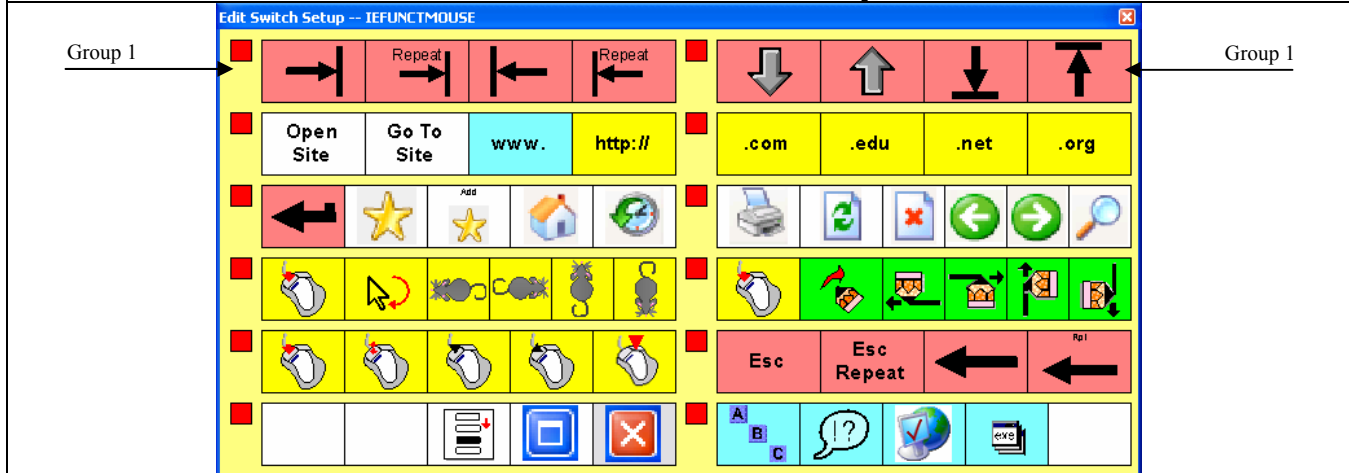
Madentec Limited, 4664 – 99th Street, Edmonton, Alberta, Canada T6E 5H5

(877) 623-3682 • www.madentec.com

Enabling Extraordinary People to do Ordinary Things!



IEFuncMouse setup



Group	Subgroup	Key Name	Key Function
1	1	Stop Scanning	immediately cancels scanning without sending any information to the computer
		Tab	activates the tab key on the keyboard – useful for tabbing forward through the links on a page – one link at a time
		Tab Repeat	repeatedly activates the tab key on the keyboard – useful for automatically tabbing forward through the links on a page – activate Discover to stop
		Shift Tab	activates the shift and tab keys on the keyboard – useful for tabbing backward through the links on a page – one link at a time
		Shift Tab Repeat	repeatedly activates the shift and tab keys on the keyboard – useful for automatically tabbing backward through the links on a page – activate Discover to stop
	2	Stop Scanning	immediately cancels scanning without sending any information to the computer
		Down Arrow	scrolls down or up the current web page – also may be used to move down or up the items in a pull down menu or dialog box list – activate Discover to stop
		Up Arrow	scrolls the web page all the way to the bottom or top
		Bottom Top	scrolls the web page all the way to the bottom or top

Discover and Internet Explorer

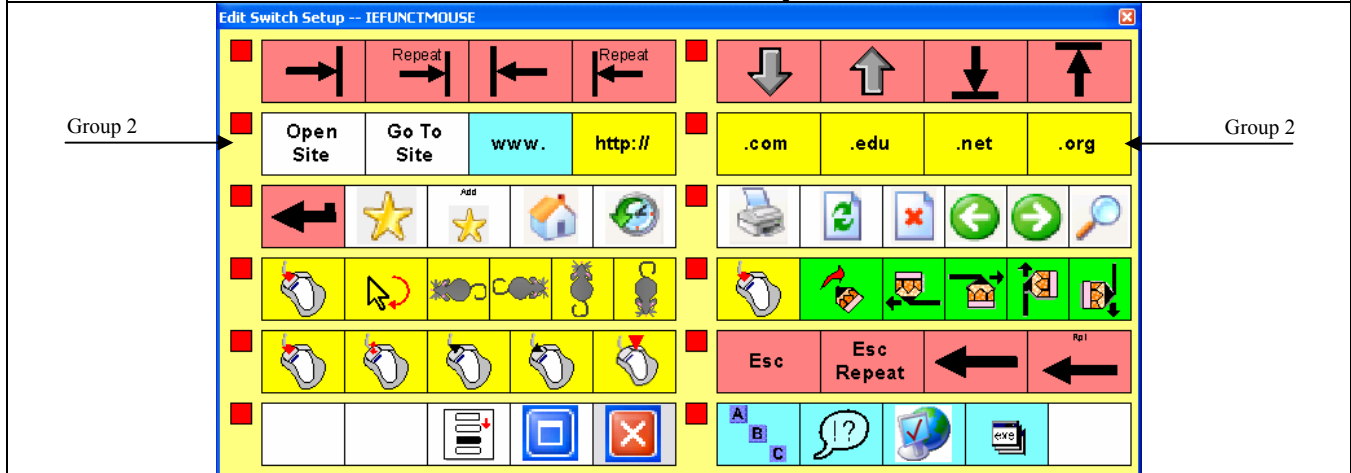
Madentec Limited, 4664 – 99th Street, Edmonton, Alberta, Canada T6E 5H5

(877) 623-3682 • www.madentec.com

Enabling Extraordinary People to do Ordinary Things!



IEFuncMouse setup (continued)



Group	Subgroup	Key Name	Key Function	
2	1	Stop Scanning	immediately cancels scanning without sending any information to the computer	
		Open Site	opens the Open dialog box	
		Go To Site	activates the OK button of the Open dialog box	
		www.	used when entering the address of a website – automatically enters the text displayed on each key – the www. key automatically branches to the IEWriting setup for the completion of the url	
	http://			
	2	2	Stop Scanning	immediately cancels scanning without sending any information to the computer
			.com	used when entering the address of a website – automatically enters the text displayed on each key
			.edu	
.net				
.org				

Discover and Internet Explorer

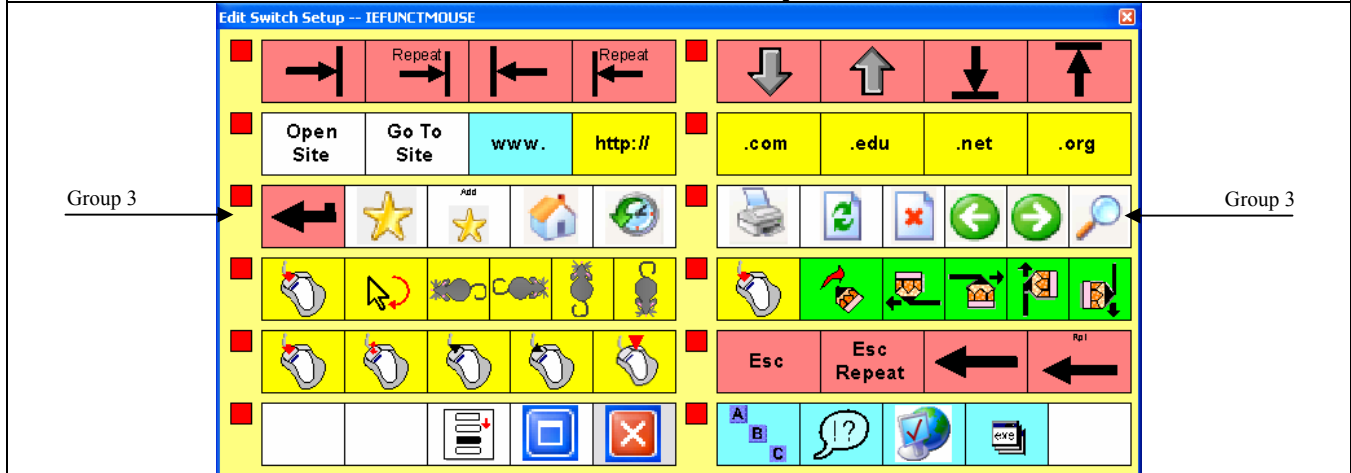
Madentec Limited, 4664 – 99th Street, Edmonton, Alberta, Canada T6E 5H5

(877) 623-3682 • www.madentec.com

Enabling Extraordinary People to do Ordinary Things!



IEFuncMouse setup (continued)



Group	Subgroup	Key Name	Key Function
3	1	Stop Scanning	immediately cancels scanning without sending any information to the computer
		Enter	activates the enter key on the keyboard
		View Favorites	activates the Favorites pull down menu – use the Down Arrow and Up Arrow keys to highlight Favorites in the list – use the Enter key to select
		Add Favorite	activates the Add Favorite dialog box – use the Tab keys to navigate within the dialog box – use the Enter key to select
		Home	opens the designated default website
		History	opens the History pane in the browser – activate this key again to close the History pane
	2	Stop Scanning	immediately cancels scanning without sending any information to the computer
		Print	prints the current page
		Refresh	refreshes the current page
		Stop	stops loading the current page
		Back	within web pages already viewed – goes to the previous or the next page
		Forward	
		Search	opens the Search pane in the browser – activate this key again to close the Search pane

Discover and Internet Explorer

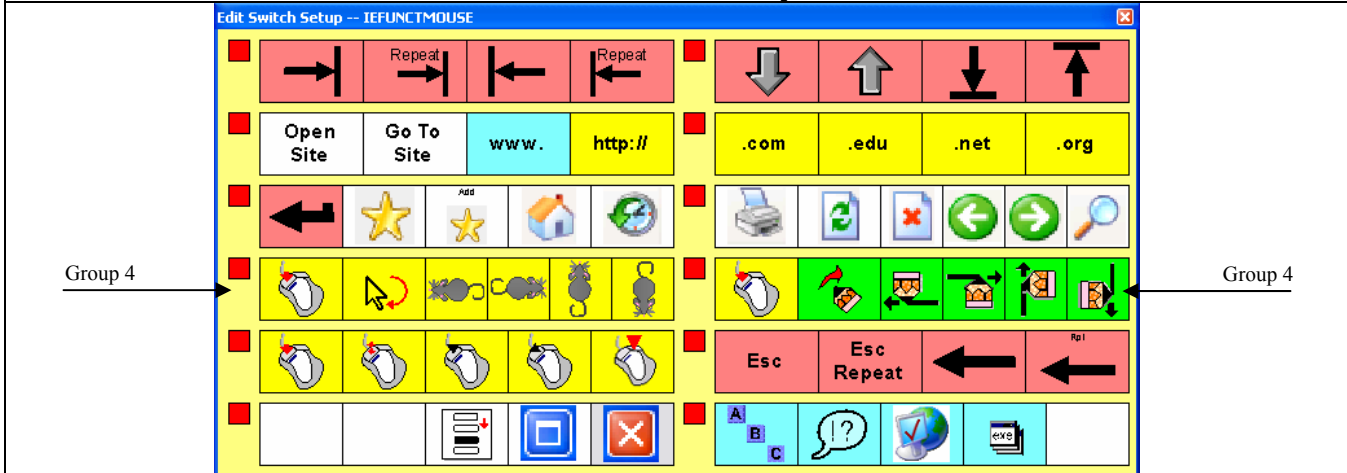
Madentec Limited, 4664 – 99th Street, Edmonton, Alberta, Canada T6E 5H5

(877) 623-3682 • www.madentec.com

Enabling Extraordinary People to do Ordinary Things!



IEFuncMouse setup (continued)



Group	Subgroup	Key Name	Key Function
4	1	Stop Scanning	immediately cancels scanning without sending any information to the computer
		Click	activates a mouse single click
		Rotate Pointer Right	rotates the mouse pointer in a clockwise direction until Discover is activated which then moves the mouse pointer across the screen in the direction it was pointed – activate Discover once more when the mouse pointer has arrived at the desired location
		Mouse Left	the four directional mouse keys will cause the mouse pointer to continuously move into the respective direction with the movement stopping by activate Discover once the mouse pointer has arrived at the desired location
		Mouse Right	
		Mouse Up	
		Mouse Down	
	2	Stop Scanning	immediately cancels scanning without sending any information to the computer
		Click	activates a mouse single click
		Drag Pointer Right	rotates the mouse pointer in a clockwise direction until Discover is activated which then moves the mouse pointer in drag mode (left mouse button down) across the screen in the direction it was pointed – activate Discover once more when the mouse pointer has arrived at the desired location – this will release the left mouse button
		Drag Left	the four directional drag mouse keys will cause the mouse pointer to continuously move into the respective direction in drag mode (left mouse button down) with the movement stopping by activate Discover once the mouse pointer has arrived at the desired location – this will release the left mouse button
		Drag Right	
		Drag Up	
Drag Down			

Discover and Internet Explorer

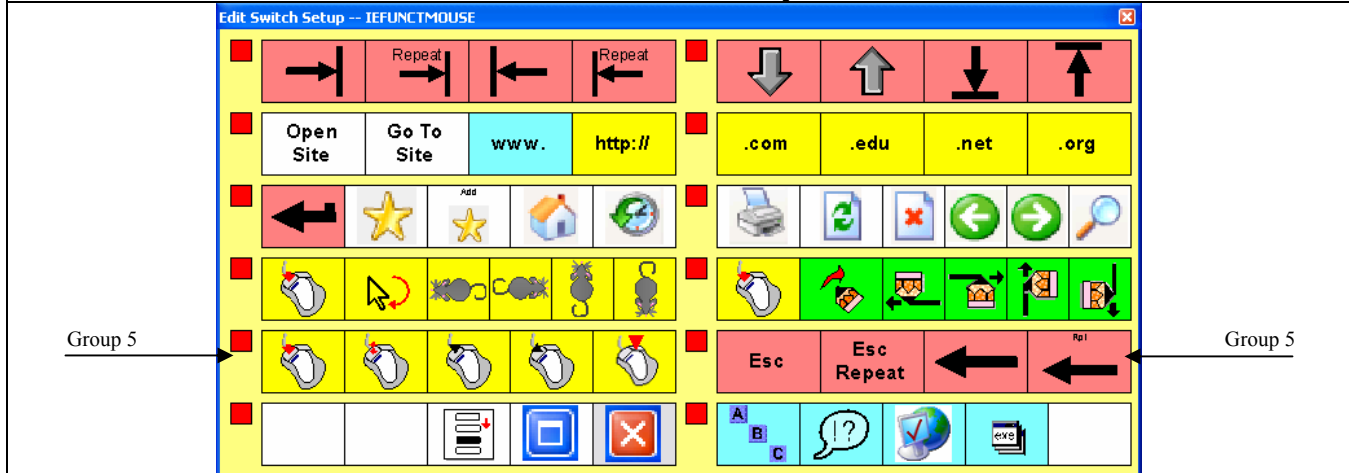
Madentec Limited, 4664 – 99th Street, Edmonton, Alberta, Canada T6E 5H5

(877) 623-3682 • www.madentec.com

Enabling Extraordinary People to do Ordinary Things!



IEFuncMouse setup (continued)



Group	Subgroup	Key Name	Key Function
5	1	Stop Scanning	immediately cancels scanning without sending any information to the computer
		Click	activates a mouse single click
		Double Click	activates a mouse double click
		Begin Drag	activates a mouse single click and continues to hold the left mouse button down, thus beginning the click and drag process
		Release Drag	activates the release of the left mouse button, thus ending the click and drag process
		Right Click	activates a single click of the right mouse button
	2	Stop Scanning	immediately cancels scanning without sending any information to the computer
		Escape	activates the esc key on the keyboard – useful for accessing the cancel button of a dialog box
		Escape Repeat	repeatedly activates the esc key on the keyboard – useful for backing out of sub menu of a pull down menu – activate Discover to stop
		Back Space	deletes one character to the left of the cursor
	Back Space Repeat	repeatedly deletes characters to the left of the cursor – activate Discover to stop	

Discover and Internet Explorer

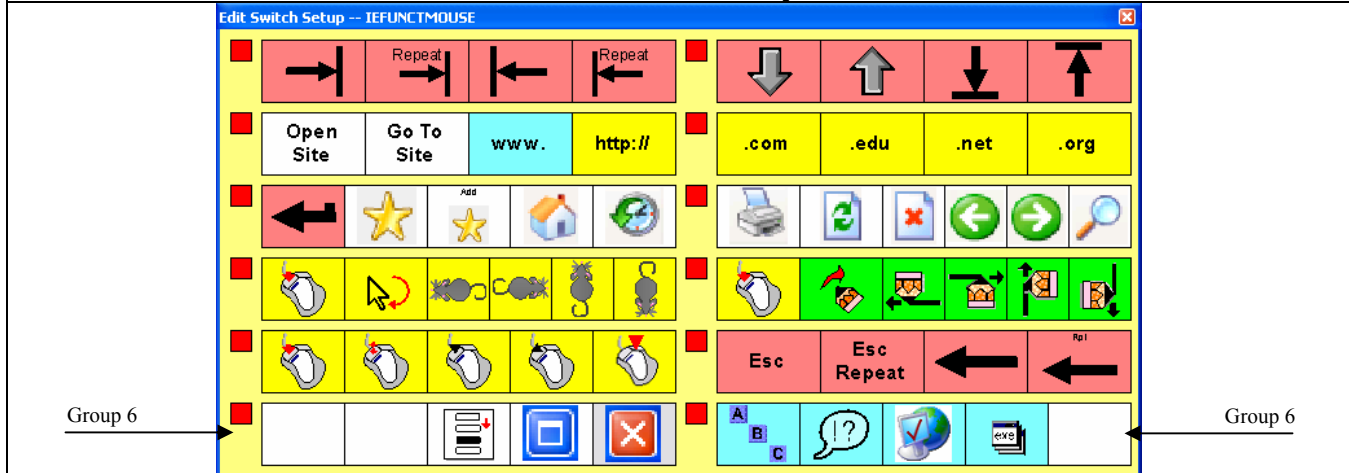
Madentec Limited, 4664 – 99th Street, Edmonton, Alberta, Canada T6E 5H5

(877) 623-3682 • www.madentec.com

Enabling Extraordinary People to do Ordinary Things!



IEFuncMouse setup (continued)



Group	Subgroup	Key Name	Key Function
6	1	Stop Scanning	immediately cancels scanning without sending any information to the computer
		blank key	this key is intentionally left blank to provide for further customization
		blank key	this key is intentionally left blank to provide for further customization
		Scan Buttons	activates the scanning of dialog box buttons and other controls – use the Enter key to select
		Max Window	activates the maximize window command
		Exit/Close Window	Exits Internet Explorer – may also be used to close pop-up windows while on the internet – be sure that the pop-up window is the active window before activating this key
	2	Stop Scanning	immediately cancels scanning without sending any information to the computer
		Writing	branches to the IEWriting setup – activate Discover to begin scanning
		Other Punctuation	branches to the IEPunct setup – activate Discover to begin scanning
		Connect	branches to the IEConnect setup – activate Discover to begin scanning
		Application Launcher	branches to the Application Launcher setup – activate Discover to begin scanning
		blank key	this key is intentionally left blank to provide for further customization

Discover and Internet Explorer

Madentec Limited, 4664 – 99th Street, Edmonton, Alberta, Canada T6E 5H5

(877) 623-3682 • www.madentec.com

Enabling Extraordinary People to do Ordinary Things!



IEWriting setup



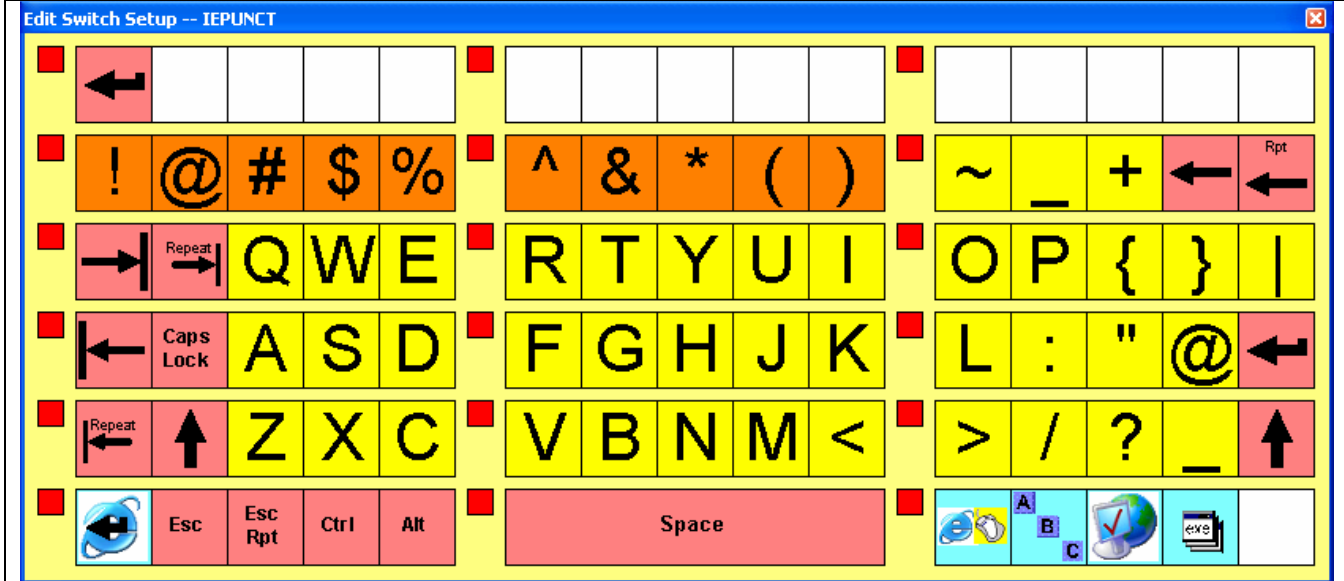
The **IEWriting.sus** setup provides the keys necessary for typing individual characters of the keyboard and accessing other keys on a standard keyboard. All modifier keys (Control, Windows Key, Alt, Shift, etc.) are also available. Some basic punctuation keys are also provided. Some keys that are available on this setup (Enter, Tab, etc.) are described in detail in the previous pages. The key with the Madentec logo (Group 1, Subgroup 1) automatically opens a predetermined website – in this case the Madentec website at www.madentec.com.

Discover and Internet Explorer

Madentec Limited, 4664 – 99th Street, Edmonton, Alberta, Canada T6E 5H5
 (877) 623-3682 • www.madentec.com
Enabling Extraordinary People to do Ordinary Things!



IEPunct setup



The **IEPunct.sus** setup provides the keys necessary for typing individual characters of the keyboard and accessing other keys on a standard keyboard – specifically extra punctuation keys that are not as frequently used. All modifier keys (Control, Windows Key, Alt, Shift, etc.) are also available. Some keys that are available on this setup (Enter, Tab, etc.) are described in detail in the previous pages.

Discover and Internet Explorer

Madentec Limited, 4664 – 99th Street, Edmonton, Alberta, Canada T6E 5H5

(877) 623-3682 • www.madentec.com

Enabling Extraordinary People to do Ordinary Things!

