



Madentec
ACCESS SOLUTIONS
Telepathic 2000™

User Guide

Telepathic 2000™

All rights reserved. No part of this publication and the hardware or software described in it may be reproduced in whole or in part. This User Guide may contain samples of names and other identification to describe the features and capabilities of Telepathic 2000 and should not be construed as endorsing any product or individual but simply to illustrate the application.

Telepathic 2000 and ScreenDoors 2000 are trademarks of Madentec Limited.
Windows 95, Windows 98 and Windows NT are trademarks of Microsoft Corporation.

Madentec Limited
3022 Calgary Trail South
Edmonton, Alberta
T6J 6V4
Phone: (780) 450-8926
Fax: (780) 988-6182

Contents

Introducing Telepathic 2000	1
Introduction	1
Registering Telepathic 2000	1
Registering a Purchased Version of Telepathic 2000	1
Registering a Download Version of Telepathic 2000	2
Transferring your Telepathic 2000 License	3
Re-Registration of Telepathic 2000	4
Product Support	5
Computer Specifications	5
Getting Started	7
What Telepathic 2000 is: A Brief Overview	7
Installing the Software	8
Launching Telepathic 2000	8
Automatic Start-up	8
Saving Settings	11
Introduction	11
Opening a Settings File	11
Save Dictionary	12
Save Settings	12
Save Settings As	12
Exit	13
The Predictor	15
Introduction	15
The Predictor Window	15
Positioning the Predictor Window	16
Resizing the Predictor Window	16
Type Faster	17
Type More Accurately	17
Predictor Settings	17
Predict Next Words	18
Capitalize New Sentences	18

Maximum Words Found	18
Maximum Words Shown	19
Shortest Word	19
Spacing	19
Position (Orientation)	19
Dictionary Settings	21
Introduction	21
Dictionary Settings	21
Learning Mode	22
Purging	23
Dictionary Size	23
Maximum Words	23
Smallest Word	23
Number of Words	23
Show words loading/importing	24
Dictionary Panel	25
Introduction	25
Accessing the Dictionary Panel	25
Viewing the Word List	26
Editing the Word List	27
Word Options	28
Abbreviation Expansion	28
Word Frequency	29
Next Word List	29
Hotkeys	31
What Are Hotkeys?	31
Turning Hotkey Selection On and Off	31
Customizing the Word Select Hotkeys	32
Importing and Exporting	33
Introduction	33
Importing	33
Format	34
Settings	34
Export	35
Importable Format	35
Dictionary Content Report	36

Spell Checking the Dictionary	36
Changing the Look	37
Color and Font Settings	37
System Scheme	38
Custom Scheme	38
Glossary of Terms	39
Index	41

Introducing Telepathic 2000

Introduction

Telepathic 2000 is a powerful word predictor that searches a dictionary for words it believes you are attempting to enter. It then offers these words in a prediction list for you to choose the correct word. Telepathic 2000's predictor is a learning predictor. If it is not familiar with a word you are typing, it learns the word and includes it in the prediction list for the next time. It also predicts the next possible word to follow the one you just typed.

Using the method of predicting current and next words, Telepathic 2000 will decrease your typing time and decrease spelling mistakes. It is especially useful for users with physical disabilities by cutting down the actual number of keystrokes necessary to type any document.

Registering Telepathic 2000

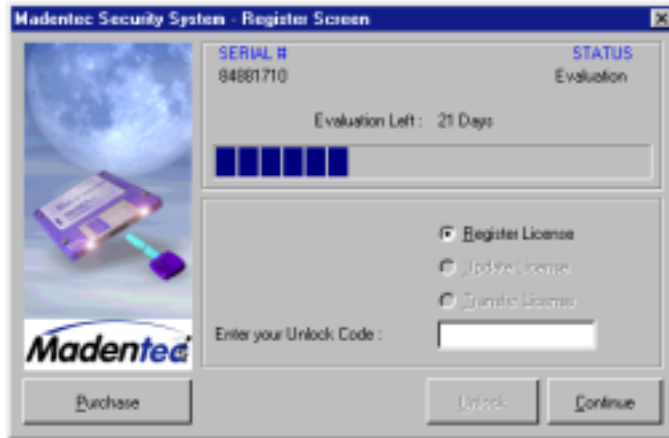
It is important to register your copy of Telepathic 2000 in order to obtain a valid license. Please read the following carefully to determine what registration path you should take.

Registering a Purchased Version of Telepathic 2000

If you have purchased a copy of Telepathic 2000 either through a dealer or directly from Madentec, do the following:

1. Call Madentec at (877) 623-3682 and ask for Product Registration.

2. Be sure to have your serial number as stated on the Registration window that appears after you have loaded Telepathic as well as the Disk ID that appears on the back of the Telepathic 2000 disk.
3. Madentec will provide an unlock code that you will use to register Telepathic 2000. On the registration screen ensure that **Register License** has been selected, type the unlock code in the appropriate box and click **Unlock**. The registration screen will now present a status of Registered. Click **Continue**. Please keep your unlock code in a safe but accessible place.

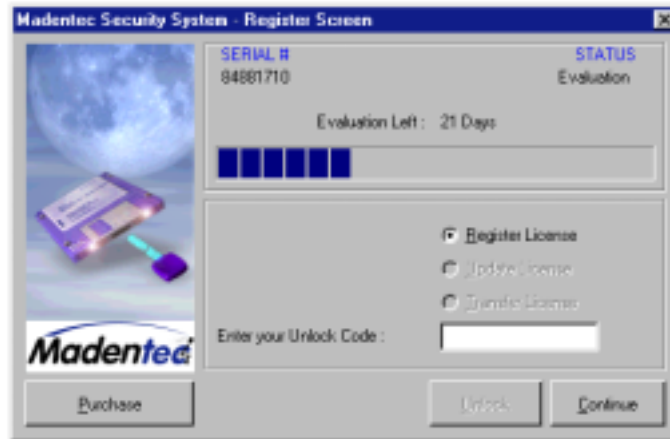


Your version of Telepathic 2000 is now registered and will not time out.

Registering a Download Version of Telepathic 2000

If you have downloaded a copy of ScreenDoors from our web site or received an evaluation disk, do the following:

1. Call Madentec at (877) 623-3682 and ask for Product Registration.
2. Be sure to have your serial number as stated on the Registration window that appears after you have loaded Telepathic.
3. Have either your Master Card or American Express credit card number ready along with the cardholder's name and expiry date.
4. Madentec will provide an unlock code that you will use to register Telepathic. On the registration screen ensure that **Register License** has been selected, type the unlock code in the appropriate box and click **Unlock**. The registration screen will now present a status of Registered. Click **Continue**. Please keep your unlock code in a safe but accessible place.



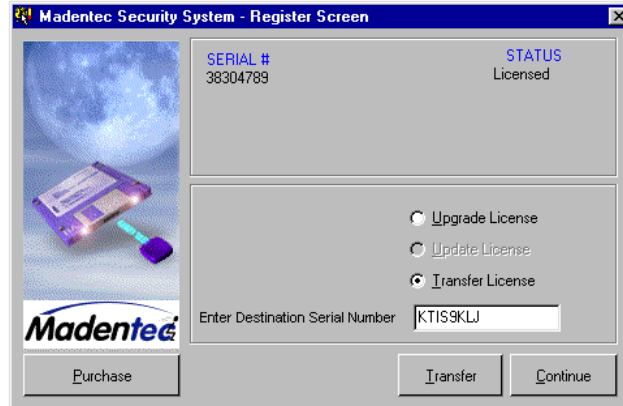
Your copy of Telepathic 2000 is now registered and will not time out.

Transferring your Telepathic 2000 License

Telepathic 2000 is licensed to operate on one computer. It is possible, however, to transfer that license from one computer to another. If you transfer the license to another computer the original version of Telepathic will expire and the current working version will reside on the transfer computer.

These instructions assume that you have a valid license for Telepathic running on the original installation computer. To transfer your license to another computer, do the following:

1. Install Telepathic on the computer you want to transfer the license to (the "target" computer).
2. Run Telepathic on the target computer and note the serial number on the security screen.
3. From the Start menu on the original computer (the "source" computer) go to Programs/Telepathic 2000/TP2000 Transfer. This will start a copy of Telepathic 2000 that will enable the registration screen allowing you to transfer the license.



4. On the source computer, select **Transfer License** and enter the serial number from the target computer in the **Enter Destination Serial Number** box.
5. Click **Transfer**.
6. Note the new unlock key. Be sure to write the unlock key down as once you have completed this operation the original version of Telepathic will show **Evaluation Expired**.
7. Enter the unlock code into the security screen of Telepathic on the target computer. This will transfer the license from the source computer to the target computer.

NOTE Remember the source computer's version of Telepathic will have expired. In order to transfer back to the source computer you must transfer the license back as stated above.

Re-Registration of Telepathic 2000

It may happen that your Telepathic 2000 license will somehow become unusable. This usually occurs when you have had a major hard disk failure and need to reinstall your software. To protect yourself from this event you may want to make a backup of a file in the Telepathic 2000 application directory (C:\Program Files\Madentec Limited\Telepathic 2000) called Telepathic2000.slx. This file holds the registration information and will ensure that your product will remain registered after a hard disk failure.

If you have had a hard disk failure and need to reinstall Telepathic, simply place this file in the Telepathic 2000 application directory after you have re-installed the software.

NOTE This slx file will only register your new installation of Telepathic 2000 if the serial number on your product registration screen is the same as when you first registered. If the recovery efforts on your computer have generated a new serial number please call Product Registration and we will be happy to assist you.

Product Support

If you have any questions during installation or while using your new software, please thoroughly review this user guide. If you still have problems please contact your local Madentec dealer.

All registered users are entitled to one year of technical support by telephone, email or fax. This support is available for one year from date of purchase. Please contact Madentec at (780) 450-8926 with your questions. You may also fax your questions to (780) 988-6182 or email techsup@madentec.com. Remember to have your serial number and version number ready for all contact with technical support.

Computer Specifications

Telepathic 2000 is designed to be used on a computer running Windows 95, Windows 98, Windows NT or higher. It is not intended for use with Windows 3.1. You should have a minimum of 8MB of RAM installed and 5MB of hard drive storage space.

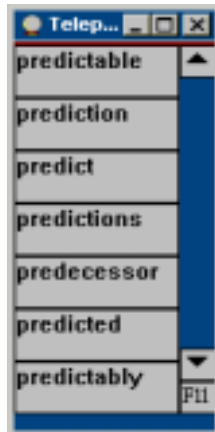
NOTE If using Telepathic 2000 with Windows NT 4 it is essential that Service Pack 4 is also installed on your system. You can download Service Pack 4 from the Microsoft web site at www.microsoft.com/windows/downloads/winntw.asp.

Getting Started

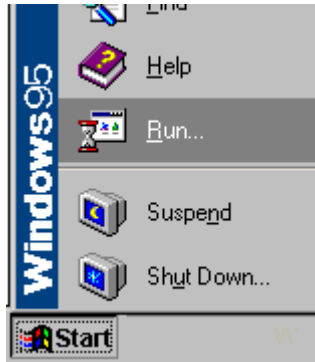
What Telepathic 2000 is: A Brief Overview

Telepathic 2000 provides you with a word predictor that guesses what you are typing. You can enter text at an improved rate into any program running on your computer.

As you type, the word predictor searches for the most likely words it believes you are attempting to enter. It then offers these words in the prediction list for you to choose. Telepathic 2000's word predictor is a learning predictor. If it is not familiar with a word you are typing, it learns the word and includes it in the prediction list for next time. As well, the predictor will predict the next possible word to follow the one you just typed.



Installing the Software



1. Place disk 1 into the floppy drive.
2. Select **Run** from the Start Menu. A window labeled 'Run' will appear.
3. Type in "a:\setup" and then click **OK**.
4. Follow the on-screen instructions

Launching Telepathic 2000

1. Click **Start**.
2. Select Program/Telepathic 2000/Telepathic 2000.
3. A dialog will appear asking you to register. Enter all the required information with your caps lock on. The serial number can be found on the outside of the Telepathic 2000 box or on the program disks.
4. When you have completed all entries click **OK**.

When you have finished registering your copy, Telepathic 2000 will launch and the on-screen keyboard and word predictor will appear on your screen.

Automatic Start-up

Telepathic 2000 will launch automatically each time you start your computer. To automatically start Telepathic 2000 you must add it to the Windows Start-Up folder. You first need to build a shortcut for Telepathic 2000 to the Start-Up menu folder:

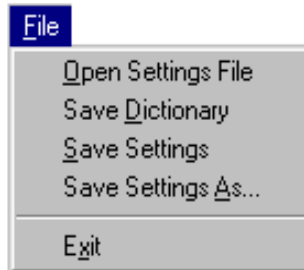
1. Click on the Start menu and select Settings/Task bar.
2. Select the Start Menu Programs Tab and click **Add**.
3. From this window use Browse to navigate to the Telepathic 2000 folder (usually c:\Program Files\Madentec Limited\Telepathic 2000) and click **Next**.
4. Select Telepathic 2000 and click **Open**.
5. Select Startup folder, click **Next**, and then click **Finish**.

NOTE It is extremely important that you do not put the executable (.exe) file into the startup folder. This will have unpredictable results. In its place create a shortcut.

Saving Settings

Introduction

Telepathic 2000 will save any number of settings for your use. The settings file you select each time you run Telepathic depends on your needs at that time. For instance, in certain situations you may require the predictor to be displayed horizontally with the menu bar showing. Other instances might require the predictor to be displayed vertically without the menu bar. You can save and then load any of these settings at will.



Once you have the set-up that you like, you can save your settings to a file that can be opened later. All aspects of saving and accessing your settings and dictionary are done through the File menu.

Settings files are saved with a .dkb extension. The default location is your Telepathic 2000 home directory, usually C:\Program Files\Madentec Limited\Telepathic 2000.

Opening a Settings File

Telepathic 2000 can open any saved setting that has been configured for a specific purpose. In this way, more than one user can operate Telepathic 2000 on the same machine but each of their settings can quickly and easily be recalled.

To open a settings file do the following:

1. From the **File** menu select **Open Setting File...**
2. Navigate to the location on your C: drive where you saved the settings. The dialog will default to start in your Telepathic 2000 directory. This is where the default.dkb settings file has been saved.
3. Select the appropriate file name and click **Open**.

Save Dictionary

The Telepathic 2000 prediction dictionary learns new words as it goes. Although Telepathic automatically prompts you to save your dictionary when you exit the program you have the option of saving it manually whenever you think necessary.

To save the dictionary select **Save Dictionary** from the **File** menu.

Save Settings

Selecting **Saving Settings** from the **File** menu will cause the current Settings file to be updated. If no other settings file has been opened then it will save the current settings to the default.dkb file.

Save Settings As

Select **Save Settings As** from the **File** menu when you want to create a new settings file and give it a unique name. All the settings are recorded the way they are at the moment you select **Save Settings As** from the **File** menu.

To save a new settings file do the following:

1. From the **File** menu select **Save Settings As...**
2. Navigate to the location on your C: drive where you want to save the settings. The dialog will default to start in your Telepathic 2000 directory. This is the default location for all settings files.
3. Name the file and click **Save**. Ensure the name you have selected is indicative of the purpose of this settings file. This way it will be easier to recall the purpose of each setting file without having to open them.

Exit

Select **Exit** from the **File** menu to close Telepathic 2000. If you have made any changes to your settings without previously saving those changes, Telepathic 2000 will prompt you to save them. You have the option of saving the settings, not saving the settings or canceling the exit operation.

The Predictor

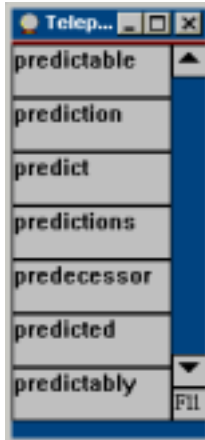
Introduction

This section describes how to position and use the predictor window. It takes a while to learn what is most comfortable for your particular situation. Experiment for the first few days to see what works best for you.

The Predictor Window

The predictor window contains as many words as you specify through the Predictor settings dialog (6-8 is usually optimum). Both the horizontal and vertical versions of the predictor window have scroll buttons on each end of the word list. You may scroll the list by clicking on these buttons. You may find it faster to type the next letter in the word.

You can move the predictor window by dragging on its title bar. You can also hide the entire window by clicking on the minimize button.



Vertical Predictor Window



Horizontal Predictor Window

Positioning the Predictor Window

The predictor window can be independently resized and moved. It can also be oriented vertically or horizontally. However you choose to position the predictor window, it should be where it is easy for your eye to glance at while you're working. This is usually close to your word processor's window.

Resizing the Predictor Window

You may resize the predictor window by dragging on the edges of the window. Resizing the window simply makes more room for longer words but does not increase the number of words that are shown. Increasing the number of words shown is done through the Predictor Settings dialog.

Type Faster

To type faster, it is usually the best practice to type the first few letters of the word you want *before* scanning the predictor's word list. This way, the chances of the word you want being in the list significantly increases. If you scan the list after every letter you type, the prediction can actually slow you down.

An exception to this rule is when you have just selected a word from the word list. The prediction list then updates with a list of possible next words that you should quickly scan. Next word prediction is based on a statistical model, and presents the most likely words that follow the one you just typed. If the word you want is not there, type the first few characters then look again.

Type More Accurately

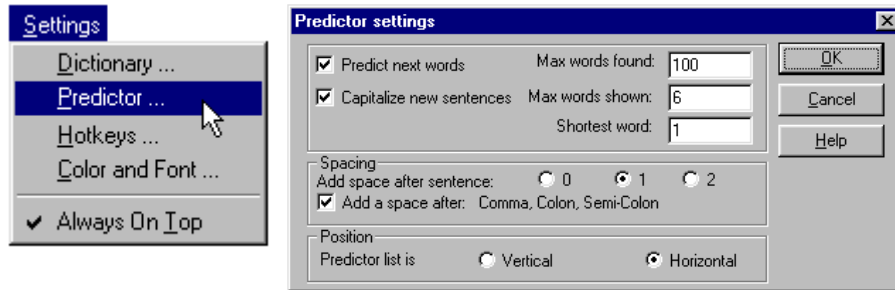
Telepathic 2000 word prediction can also help increase accuracy of spelling and grammar. By seeing the word choices predicted you are presented with words spelled correctly. With the next word prediction, you are presented with proper grammar choices. These features can be extremely helpful to people with learning disabilities.

To maintain this accuracy, you need to pay attention to the prediction options and dictionary. With learning turned on, the predictor *will* learn misspelled words (this ensures the ability to enter new words, such as proper names). If you are afraid of entering incorrectly spelled words turn off the automatic learning.

From time to time, you should also perform maintenance on your prediction dictionary. You can export the dictionary to a text file where you can perform a spell check in most word processors. Once you have corrected the misspellings, you can re-import the dictionary.

Predictor Settings

Everything about the predictor is aimed at speeding text input. This includes not only predicting words, but also adding spaces and capitalization for you. You can adjust more than a dozen of these features. Most of these are found in the Predictor settings dialog. You open this dialog by selecting **Predictor...** from the **Settings** menu.



Predict Next Words

Telepathic 2000 keeps track of what words you type after one another. The next time you type the first word, it predicts the most likely words that will follow. While this is an extremely beneficial feature for most, it can be confusing to some. If you wish, you may turn off next word prediction by deselecting the check box titled **Predict next words** in the Predictor Settings dialog.

With this feature deselected, the predictor word list will be empty after you select a word from it.

Capitalize New Sentences

Telepathic 2000 will automatically capitalize the next letter after a sentence-ending punctuation mark (period, exclamation mark, question mark). This handy feature saves a key click each sentence and helps to speed text input. You can turn off this feature by deselecting the checkbox **Capitalize new sentences** in the Predictor settings dialog.

Note In some word processors this feature is already present. In this case the predictor setting will be overwritten by the word processing software.

Maximum Words Found

Telepathic 2000 searches the prediction dictionary and presents the most likely words that match what you've typed so far. It can only show so many on the screen, but still can store many more to be displayed as you scroll through the prediction word list. You can choose the maximum number of words found that you will be able to scroll through in the prediction list.

Although the predictor works very fast, on slower machines you can improve performance somewhat by limiting the maximum number of words found to 15 or less.

Maximum Words Shown

This feature adjusts how many words will actually appear in the prediction window at one time. Telepathic 2000 automatically resizes the window to try to fit the number of words optimally on your screen. You can also manually resize the window.

There is a trade off in displaying too many words at one time. You may have a better chance of seeing the word you want after just a keystroke or two, but you will take more time scanning the entire word list looking for it. A good maximum to work with is seven. Start there and see what works best for you.

Shortest Word

With limited space in your predictor window, it can be a waste to have word slots being taken up with one or two letter words (such as “it”, “is”, and so on). In the case of those words, it is often just as fast to just finish typing the entire word.

For this reason, you may specify what the shortest word to be displayed will be. Since a good practice in word prediction is to type the first two or three letters then look at the prediction, a good number to set the shortest word to is 3 or 4.

Note that an exception to this rule is when Telepathic 2000 is predicting next words. In this case, you gain a keystroke by selecting even a one-letter word from the list because a space is automatically added for you after the word. If you do not select one of the next words predicted and begin typing the word from scratch, the predictor will revert back to displaying words with the specified minimum number of letters.

Spacing

You can choose to have Telepathic 2000 automatically add a one, two or no spaces after sentence-ending punctuation such as a period. You can also choose to automatically add spaces after mid-sentence punctuation such as commas, colons and semi-colons. Both these features may seem a bit disconcerting at first if you are used to typing all your own spaces. However, once you get used to it, it can be a great time saver.

Position (Orientation)

The predictor window can be oriented horizontally (words positioned end to end) or vertically (words positioned above/below one another). Which way you choose depends on your work environment and what you are used to.

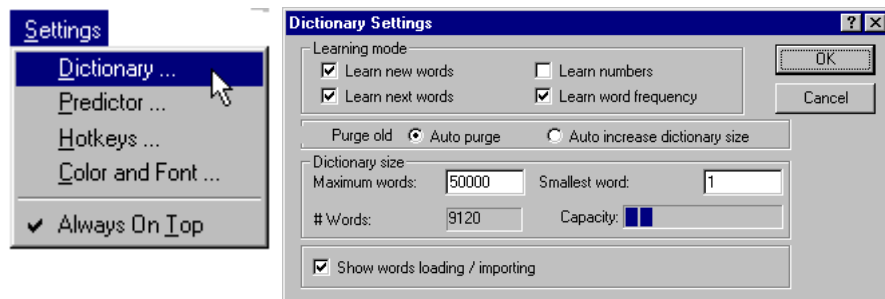
Dictionary Settings

Introduction

In Telepathic 2000 you can adjust the learning style of the dictionary, set the dictionary size, import and export dictionaries, clean up unwanted words and set abbreviations for large phrases through the dictionary.

Dictionary Settings

Selecting **Dictionary...** from the **Settings** menu, will set the learning mode and dictionary size for any saved dictionary.



Learning Mode

There are four ways for the predictor to learn automatically. Learning can be a very handy feature since it allows the predictor to adapt itself to the way you type. However, you may want to turn off various features of learning depending on your circumstance.

Learn New Words Check the box **Learn New Words** to enable the predictor to automatically learn new words as you type them. As you type a new word, you will notice it appear in red lettering in the predictor window. This lets you know you are typing a word that is new to the predictor dictionary.

You may want to disable Learn New Words if you feel a number of new words will be typed incorrectly, or if you feel there may be new words typed that you don't want in your dictionary.

Learn Next Words Telepathic 2000 automatically learns which words follow the one you just typed. Turn this feature on by selecting the checkbox **Learn Next Words**.

Learn Numbers It usually does not make much sense for the predictor to store all the numbers you've typed in the dictionary (unless it is your address, phone number, or other frequently used number). For this reason, you can turn off the automatic learn feature for numbers by deselecting the checkbox **Learn Numbers**.

To teach the dictionary your phone number, temporarily turn on number learning by selecting the checkbox. Type your phone number (the dictionary will learn it) and then turn number learning back off again by deselecting the checkbox.

Learn Word Frequency When the checkbox titled Learn Word Frequency is selected in the Dictionary Settings dialog, Telepathic 2000 will automatically update the predictor dictionary so the most common words are presented first. This means the words you use the most conveniently show up the soonest.

After you get comfortable with your dictionary you may want to turn off Learn Word Frequency. For example, you will know that after typing "th", the word "they" is the fourth on the list. This can help speed typing since you will come to know where in the list words will appear.

Purging

You can set how many words you would like in your dictionary. When the number of words exceed this maximum, you have the choice of letting Telepathic automatically purge words from the dictionary that haven't been used much. Set this feature by selecting the radio button titled **Auto Purge** from the **Dictionary Settings** dialog.

Alternatively, you can choose to let Telepathic automatically increase the size of the dictionary to accommodate the new words you have typed. Set this feature by selecting the radio button titled **Auto increase dictionary size** in the **Dictionary Settings** dialog.

Dictionary Size

On older computers, you may find it helpful to limit the maximum size of the dictionary, as a very large dictionary may slow operation of the predictor somewhat. For any computer running at speeds of 100 MHz or higher, this shouldn't be a problem.

One more reason for limiting the size of the dictionary is for prediction efficiency. The more words in the dictionary, the more letters you will likely have to type before you see the desired word in the predictor list. A smaller dictionary with longer words you type often is better than a very large dictionary containing every word in the language.

Maximum Words

Define the maximum number of words in your dictionary by typing in the text field labeled **Maximum Words** in the **Dictionary Settings** dialog. The default value of 50,000 should be enough for most cases.

Smallest Word

You can define how many letters you want the smallest words to be in your dictionary. This is useful so your dictionary doesn't fill up with one or two letter words, taking up room in the predictor list instead of longer words. Define the smallest word by typing in the text field labeled **Smallest Word** in the **Dictionary Settings** dialog (usually 3 is a good number).

Number of Words

Telepathic 2000 displays how many words are stored in your dictionary in the **Dictionary Settings** dialog. Next to this number, you will see a "fuel gauge" showing the capacity of your dictionary. (The total capacity of the dictionary is defined by the **Maximum Words** setting in the **Dictionary Settings** dialog.)

Show words loading/importing

Telepathic lets you import any text file into your dictionary. This is explained in the section titled “Importing and Exporting” on page 33. You can display the words as they are being imported by selecting the checkbox titled **Show words loading/importing** in the Dictionary Settings dialog.

Displaying the words as they are being imported will slightly slow down the loading process.

Dictionary Panel

Introduction

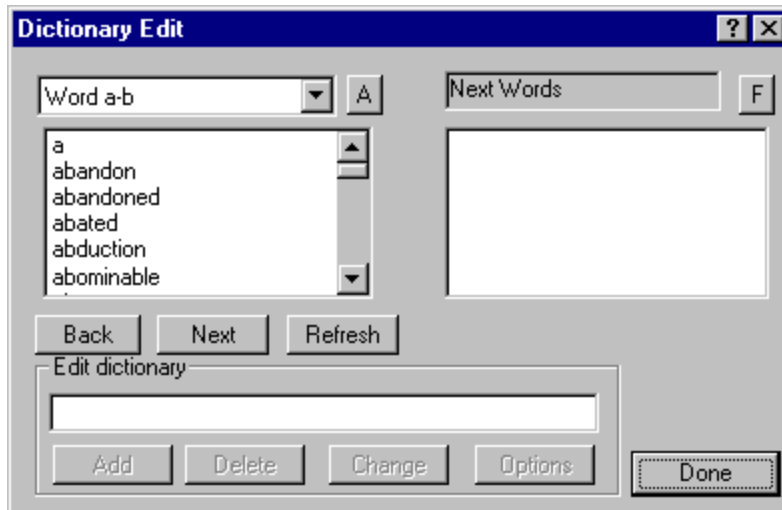
The Dictionary Panel is how you can access the dictionary in Telepathic 2000. From this list you can individually delete unwanted words, assign abbreviations to words, change how a word is spelled and add new words.

Accessing the Dictionary Panel



You can view and edit words in the prediction dictionary. This is done through the **Edit Dictionary** menu by selecting **Dictionary Panel**.

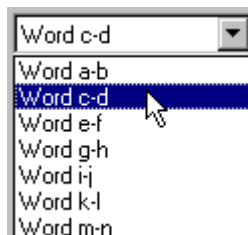
The Dictionary Panel displays a list of words on the left of the dialog. These are the words in the prediction dictionary. The list on the right is where next words are displayed. The various buttons on the bottom of the dialog are used to view and edit the words in the dictionary.



Viewing the Word List

You can choose between viewing words in alphabetical order, or by order of their frequency of use in the dictionary. Toggle between these two options by clicking the button labeled “A” (or “F”) located at the top-right of the word list. After you click on this button, Telepathic 2000 will take a few moments to re-sort the word list.

There can be several thousand words in the prediction dictionary at once. This can make the list very long for viewing. In order to break down the viewing of the list to a reasonable level, there is a selection at the top of the list where you designate which letter group (or frequency group) you want to view.



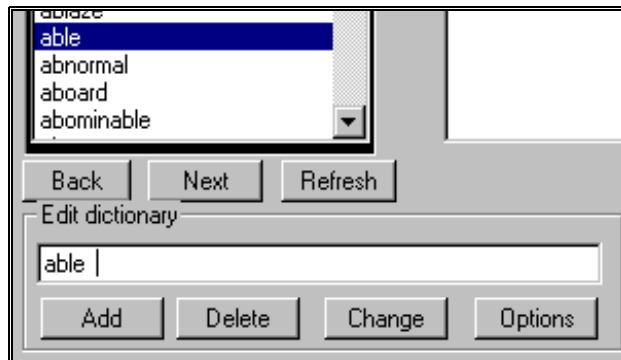
For example, to view the word “candle”, select Word c-d from the pop-up menu above the word list. To view the one hundred most commonly used words in the dictionary, click on the top right button until its label reads “F”, then select “1-100” from the pop-up menu above the word list.

You can also change which word group you select with the buttons labeled **Back** and **Next**, found below the word list. The **Refresh** button updates the list if adding a new word has changed the dictionary.

Editing the Word List

To individually edit words in the dictionary follow these steps:

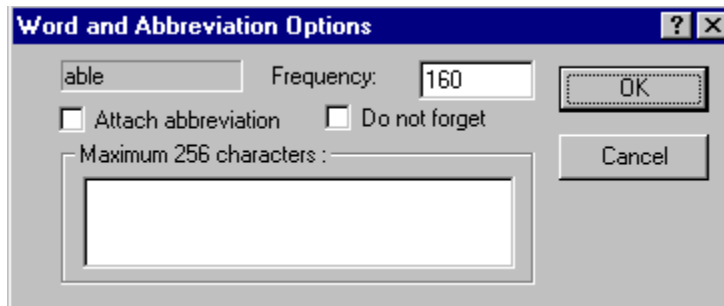
1. Select the word group (by first letter) from the pop-up menu above the word list.
2. Scroll the list until you see the word you are looking for.
3. Click on the word to highlight. The word will also appear in the edit text field titled Edit Dictionary below the word list.
4. Make changes to the word in the edit text field and click Change; or, select Options to view more details about the word.



6. You can also delete a word from the dictionary by selecting it from the word list and clicking the **Delete** button found near the bottom of the dialog.
7. Finally, you can manually add a new word by typing it in the Edit Dictionary text field and clicking the **Add** button. (Remember, you can also have Telepathic 2000 automatically add words to the dictionary by setting the learn options. See “Learning Mode” on page 22 for more details.

NOTE If adding numbers ensure that **Learn Numbers** is selected in Learning mode in Dictionary settings.

Word Options



Word and Abbreviation Options Dialog

You can edit options for a word by selecting it from the word list in the **Edit Dictionary** dialog, and then clicking on the button titled **Options** located at the bottom dialog.

The word is displayed at the top of the resulting dialog, along with the frequency number that is associated with it. **Frequency** indicates how many times the word has been used. Each time you type or select that word from the prediction list its frequency counter goes up by one.

Words with very low frequency counts (less than 10) stand the risk of being automatically purged from the dictionary. If you would like to make sure this does not happen to a specific word, select the checkbox titled **Do not forget**.

Abbreviation Expansion

Telepathic 2000 allows you to store abbreviations which, when typed, expand into a much longer word, sentence, or paragraph. For example, the abbreviation “hh” could expand into “Hello, how are you?”.

To create an abbreviation expansion, follow these steps:

1. Create the abbreviation as a new word by typing it, followed by a space, into any document by using Telepathic 2000 (or add it manually in the **Edit Dictionary** dialog)
2. Select the newly created word in the **Edit Dictionary** dialog word list. Note: you may need to click the refresh button)
3. With the word selected, click the **Options** button.
4. Select the checkbox titled “Attach Abbreviation”

5. In the text field provided below the checkbox, type the expansion you wish to be associated with the abbreviation.
6. Click **OK**.

The next time you type the abbreviation followed by a space, Telepathic will automatically replace it with the expansion. This can save much time and effort for phrases you tend to type a lot.

Word Frequency

The frequency of a word defines how often it has been used in the past and, consequently, how quickly it will be predicted in the future. You may wish for a newly formed word to be predicted right away (for example your name). Rather than wait for the dictionary to slowly increase the frequency of that word as it is used, you can manually increase it in the **Word Options** dialog.

Select the number in the text field titled **Frequency**, and replace it with a higher number. A number higher than 300 will guarantee a quick prediction.

Next Word List

When you select a word from the list on the left of the **Edit Dictionary** dialog, the “next words”, or words that have followed the selected word in the past, appear in the list on the right.

You can view the next word list in order of frequency, or alphabet. Click on the button above the word list displaying an “F” (for frequency), or “A” (for alphabet).

Hotkeys

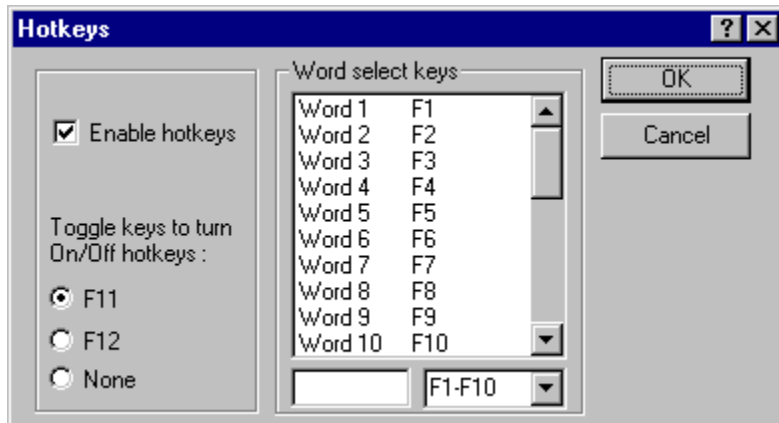
What Are Hotkeys?



Hotkeys allow you to take advantage of the word prediction using the normal physical keyboard. You can use a hotkey on the keyboard to select the desired predicted word. For example, you type “h” and want to select the first word predicted. With function keys selected as the desired hotkeys, you simply press the F1 to complete typing the word.

Turning Hotkey Selection On and Off

You can turn hotkeys on and off by selecting the **Hotkeys** item from the **Settings** menu. Globally enable hotkeys by selecting the **Enable hotkeys** checkbox.



You can also turn on/off hotkeys on the fly using either the F11 or F12 function key (selected by radio buttons on the left side of the Hotkeys dialog). This works in any program you happen to be using with Telepathic 2000. The predictor window provides useful feedback at the lower right corner showing you which key will turn hotkey selection on and off. The window also presents the active hotkeys next to the corresponding words. When these tags are shown in red, hotkeys are enabled.

Customizing the Word Select Hotkeys

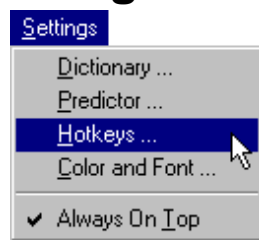
You can select between several options to determine which keyboard hotkeys will select the predicted words. This is done from the pop-up menu item near the bottom of the **Hotkeys dialog**. You may choose between function keys, number keys or the numeric keypad.

Importing and Exporting

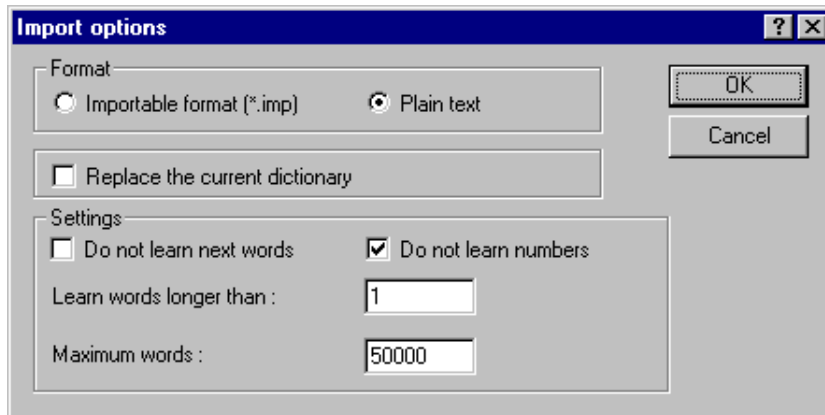
Introduction

Importing and Exporting has to do with maintaining and editing the prediction dictionary. You can add words to the dictionary by importing any text file. You can also export the contents of the dictionary for spell checking and general maintenance.

Importing



Import text into the prediction dictionary by selecting the **Import...** from the **Edit Dictionary** menu. You will be presented with a dialog allowing you a number of import options. Once you have set your options and clicked **OK**, the standard file selector dialog will appear allowing you to choose the text file you wish to import. Note that only files saved as plain text may be imported into a Telepathic 2000 dictionary.



Format

You can choose between two different formats of files to be imported into the dictionary; the first is called **Importable format**. This is a file that has been previously exported from either Telepathic 2000 or ScreenDoors 2000. Importing this type of file would be the final step of a maintenance procedure, which involves exporting the dictionary, spell checking it, then re-importing the corrected file.

The second type of file that can be imported is **Plain text**. This is the more common format used when importing and is how you can add large quantities of words to the dictionary at one time. Any file saved as plain text can be imported into the dictionary. Telepathic 2000 will learn any new words in the text as well as increment the word frequencies for all the words already in the dictionary. The prediction will immediately reflect these changes to the dictionary.

Alternatively, you can completely replace the existing prediction dictionary with the text file being imported. To enable this feature, select **Replace the current dictionary** in the Import dialog. Select this feature when re-importing a spell-checked dictionary.

Settings

The settings in the Import dialog are self-explanatory. You can choose whether or not to **Do not learn next words** or **Do not learn numbers** during the import process by selecting the corresponding checkbox in the Import dialog.

You can also define how large a word must be before it will be stored in the dictionary by typing the desired number of letters in the text box next to **Learn words longer than** in

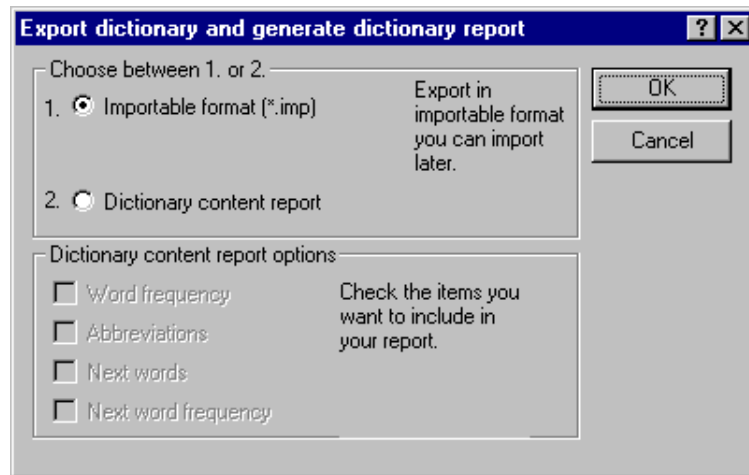
the Import dialog. This helps you stop your dictionary getting filled up with two or three letter words, thus making your prediction more efficient.

Finally, you can limit the overall size of your dictionary by typing in the text field next to **Maximum words** in the Import dialog. Once the dictionary has reached this number of words it will not learn anymore new ones.

Export



You can export the words in your dictionary to a text file in a variety of formats. This helps you see what words are in your dictionary, helps you spell check and correct your dictionary, and allows you to view other statistics. Export the Telepathic 2000 dictionary by selecting **Export...** from the **Edit Dictionary** menu.



You can export the dictionary in two formats: **Importable** or **Dictionary content report**.

Importable Format

The purpose of exporting the dictionary in importable format is so you can check for spelling errors in the dictionary using any word processor with a spell checker. You can then re-import the corrected dictionary.

Importable format contains many special characters that Telepathic 2000 uses as word markers. These are used in the import function of Telepathic. You should instruct your spell checker to ignore these special characters.

Dictionary Content Report

You can view many statistics about the words in your dictionary. To create a report on the contents of your dictionary select **Dictionary content report** from the Export dialog. There are four options that can be viewed along with each word in the dictionary. These are:

- ✓ Word Frequency
- ✓ Abbreviations
- ✓ Next Words
- ✓ Next Word frequencies

You can name the resulting file, which is saved, as a plain text document.

Spell Checking the Dictionary

You can spell check and correct words in the Telepathic 2000 prediction dictionary using any word processor with a spell-checker. To spell check your dictionary, complete the following steps:

1. Select **Export** from the **Edit Dictionary** menu
2. Select **Importable format**
3. Save the exported file under any name you can easily remember
4. Open the newly exported file using your favorite word processor
5. Complete a spell check on the file using your word processor's spell checker. Tell the spell checker to ignore the special characters used within the text file as markers.
6. Once the spell check is complete save the file in your word processor as "Plain text".
7. Select **Import** from the **Edit Dictionary** menu.
8. Select **Importable format** from the dialog.
9. Select **Replace existing dictionary** from the Import options dialog, and click **OK**.

Select the newly saved, spell-checked file from the resulting file selector dialog. When Telepathic 2000 is finished importing the file, the prediction dictionary will contain all the spelling corrections.

Changing the Look

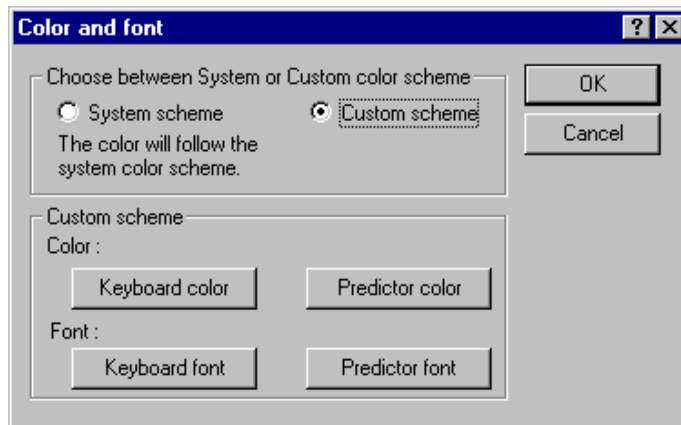
Color and Font Settings



You can customize the appearance of Telepathic by changing the background color and the font of the letters displayed on the predictor bar.

To customize the appearance of Telepathic, select **Color and Font** from the **Settings** menu.

The resulting dialog allows you to choose from the System Color Scheme, or to customize your own color scheme.



System Scheme

With **System scheme** selected in the **Color and Font** dialog, Telepathic will use the colors defined in your standard Windows settings.

Custom Scheme

With **Custom Scheme** selected from the **Color and Font** dialog, you can define how the predictor window will look and the font used for predicted words.

Glossary of Terms

Abbreviation Expansion

The automatic entering of an entire sentence, phrase, or paragraph when an abbreviation is typed. Example: When the abbreviation ABC is typed, Telepathic 2000 will automatically back up and delete the abbreviation, then type out the expansion - American Broadcast Corporation.

Desktop

What is shown on the screen of the computer when no other programs are running. Files can be viewed, moved, or deleted from this mode.

Dialog

A window containing a message either asking for information or offering various options

Next Words List

The right hand list on the main settings window which displays the next words of a specific word.

Predictor

The window which displays a choice of words that are "predicted" based on the user's typed input.

Settings file

The Telepathic files which hold all user settings for the program, including the size and position of the on-screen keyboard.

Prediction List

This refers to the window where predicted words are shown.

Purge

To erase undesired items in a collection when the total exceeds the number of set items that can be used.

Settings File

The collection of a window arrangement, preferences, and settings stored together in one file. This is where users can save common working set-ups.

Word Cell

The individual windows where predicted words are displayed in the Prediction list.

Word List

The list found on the Main Settings window, which displays words from the dictionary.

Index

A

- abbreviation expansion 28
- automatic capitalization 18

C

- capitalization
 - automatic 18
- cleaning the dictionary 23
- color and font
 - custom 38
 - default 38

D

- dictionary
 - cleaning the dictionary 23
 - content report 36
 - editing word list 27
 - exporting 35
 - format 35
 - importing 24, 33
 - format 34
 - settings 34
 - importing and exporting 33
 - learning 22

- new words 22
- next words 22
- numbers 22
- next word list 29
- panel 25
- purging 23
- saving 12
- size 23
 - maximum words 23
 - smallest word 23
- spell checking 36
- viewing word list 26
- word frequency 22
- dictionary panel 25

E

- exporting
 - format 35

H

- horizontal
 - predictor window 15
- hotkeys 31
 - customizing 32
 - turning off and on 32

I

installing 8

K

keyboard

- color and font
 - custom 38
 - default 38
- hotkeys 31

L

launching 8
license

- transferring 3

N

next word prediction 18
next words

- dictionary 29

P

predictor

- abbreviation expansion 28

predictor window 15

- adding spaces 19
- automatic capitalization 18
- helping with accuracy 17
- horizontal 15
- increasing typing speed 17
- learning disabilities 17
- maximum words found 18
- maximum words shown 19
- orientation 19
- position 16, 19
- predict next words 18
- resizing 16
- selecting 15
- shortest word shown 19
- vertical 15

R

registering

- download version 2
- purchased copy 1
- transferring 3

S

save as 12
saving settings 12
saving the dictionary 12
settings

- saving 12

starting 8
system scheme 38

T

type 34
typing accuracy 17

V

vertical

- predictor window 15

W

word list

- editing 27
- viewing alphabetically 26
- viewing frequency 26